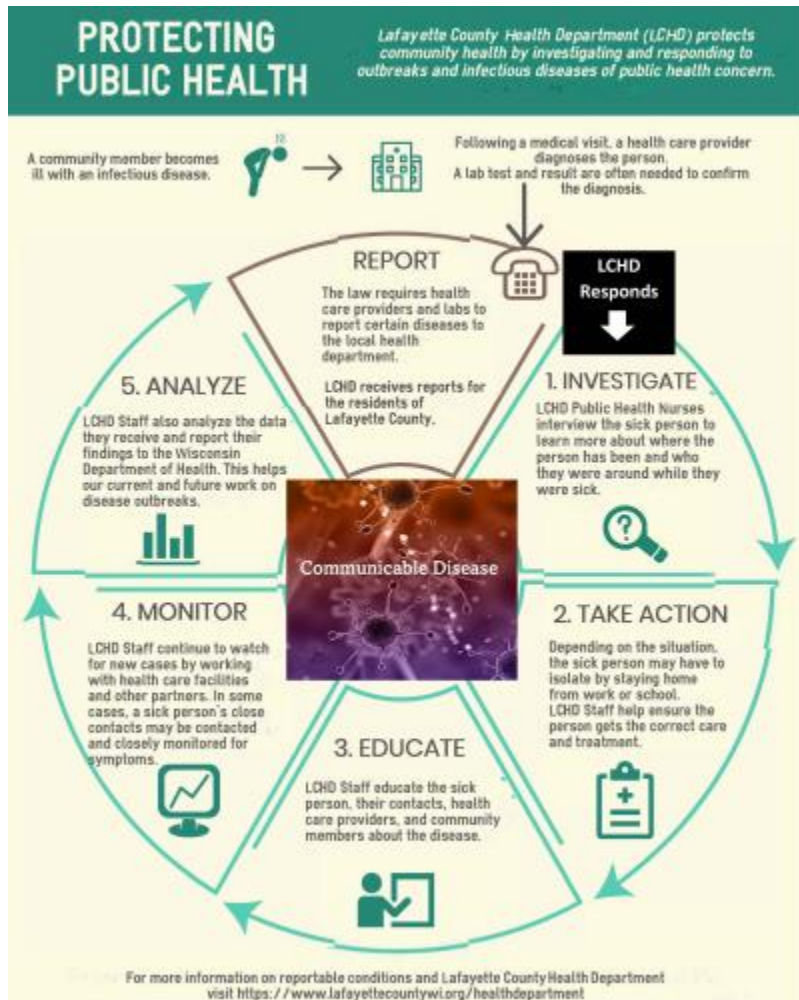


Communicable Diseases



Did you know?

- Some communicable diseases are of urgent public health importance and need to be reported immediately while others have to be reported within 72 hours.
- Local Health Department's (LHD's) have primary responsibility for communicable disease follow-up within their jurisdiction.
- LCHD's Public Health nurses spend significant time on communicable disease surveillance and education.
 - LHD's "may do what is reasonable and necessary for the prevention and suppression of disease." – [Wis. Stat. § 252.03\(2\)](#)
 - Local health officers "shall promptly take all measures

necessary to prevent, suppress and control communicable diseases. . ." – [Wis. Stat. § 252.03\(1\)](#)

Communicable Diseases

Communicable diseases, also known as infectious diseases or transmissible diseases, are illnesses that result from the infection, presence and growth of pathogenic (capable of causing disease) biologic agents in an individual human or other animal host. Infections may range in severity from asymptomatic (without symptoms) to severe and fatal. The term infection does not have the same meaning as infectious disease because some infections do not cause illness in a host.

Disease causing biologic agents include viruses, bacteria, fungi, protozoa, multicellular parasites, and aberrant proteins known as prions. Transmission of these biologic agents can occur in a variety of ways, including direct physical contact with an infectious person, consuming contaminated foods or beverages, contact with contaminated body fluids, contact

with contaminated inanimate objects, airborne (inhalation), or being bitten by an infected insect or tick. Some disease agents can be transmitted from animals to humans, and some of these agents can be transmitted in more than one way.

Disease Reporting

Wisconsin has communicable disease reporting requirements that support public health's responsibilities to control the incidence and spread of communicable diseases in our state. Certain diseases are considered to have significant public health impact, and **any confirmed or suspected cases must be reported promptly.**

To report a communicable disease or public health emergency, please call the Health Department at 608-776-4895 or email [http://publichealth \[at\] lafayettecountywi.org](mailto:http://publichealth[at]lafayettecountywi.org)

- [List of Reportable Communicable Disease](#)
- [WISCONSIN CHILDHOOD COMMUNICABLE DISEASES](#)
- [Division of Public Health, Bureau of Communicable Diseases \(BCD\)](#)

Public Health's Role

- Detect and report cases of significant infectious disease.
- Investigate the circumstances of each case.
- Provide pertinent information to families and communities.
- Recommend and implement measures to control the spread of disease.

Communicable Disease Prevention

- Good handwashing technique
- Cough and sneeze etiquette
- Stay up to date on all vaccines
- Stay home when sick and avoid others who are sick
- Good cleaning and disinfecting techniques on commonly used surfaces

For more information:

- [WI DHS Communicable Diseases](#)
- [Wisconsin Communicable Disease Reporting Requirements](#)
- [Immunizations: Wisconsin Immunization Program](#)
- [WI DHS STD: Information for the General Public](#)