

Lafayette County

Land and Water Resource Management Plan

2016-2025



2008-2013 LWRM Plan

Goals and Accomplishments



Goal 1 - Soil Erosion Reduction

Objective 1 – Reduce Farm/Ag Erosion

1. Conservation plans to “T” – 1,960 ac/yr
2. Transect Survey
3. Hydroseeding & Mulching – 20/yr
4. Educate about conservation programs – 1 news article & brochure
5. Removal of Apple & Cherry Branch from 303(d) list – 840 ac/yr
6. Keep livestock in Co. – Help 3 landowners with “Grow WI” grant/yr
7. County Cost Share Program - \$75,000/yr

Objective 2 – Reduce Construction Site Erosion/Non-Ag

1. Fact Sheets to local government to build awareness – annually
2. Assist landowners with old mine sites meeting ordinance – as needed

Goal 2 – Animal Waste Management

Objective 1 – Implement Co. Manure Storage Ordinance

1. Assist landowners w/ applications & abandonments – 2 new/yr
2. Assist farmers to meet State Standards & Prohibitions – certify 5/yr

Objective 2 – Implement Livestock Siting Ordinance

1. Review applications from landowners – 2/yr

Objective 3 – Implement Ag Performance Standards

1. Database of priority farms
2. Rank priority farms – annually
3. Administer cost share program – 2 manure storages annually
4. UWEX/LCD workshops – 2/yr 2011 – 15 farmer, 12 class sessions
5. Monitor spreading permits for non-ag – review 2/yr

Objective 4 – Promote new technologies

1. Research anaerobic digesters & renewable energy – attend meetings, supply fact sheets to interested landowners.
2. Research carbon sequestration – 1 news article annually

Objective 5 – Increase # of cropland acres w/ nutrient management plan

1. Require permitted facilities to submit plan – 2/yr – 400 acres

Goal 3 – Land Use Planning/Farmland Preservation

Objective 1 – Administer Farmland Preservation

1. Conduct annual status review – 10/yr
2. Assist new participants – 5/yr
3. Joint meeting with Planning & Zoning – 1 annually
4. Support FPP as it evolves to Working Lands – as needed
5. Educate landowners & local government to changing rules – 3 township meetings/yr

Objective 2 – Promote Manage Forest Law

1. Encourage landowners to participate – 1/yr
Statement on all revision with forest

Objective 3 – Smart Growth/SW Grassland/State Regs & Legislation

1. Assist with development of SW Grassland project – 1-2 meetings/yr
2. Encourage countywide land use planning-assist local officials

Goal 4 – Water Quality Protection

Objective 1 – Groundwater Protection

1. Water testing at Fair – 50-75 samples annually
2. Cost share & Bentonite screen for well abandonment – 10-12/yr
3. Information & Education Fair – Educate 100/yr
4. Earth Day – Educate about 250 students

Objective 2 – Surface Water Protection

1. Participate in Clean Sweep Program 2007, 2009, 2011

Objective 3 – Focus on Mining

1. Work with DNR & landowners to reclaim old mine sties – as needed

Objective 4 – Promote Proper land application of nutrients

1. Work with non-ag applications of Phosphorus-free fertilizers – adoption of regulations/ordinance re: Phosphorus -free fertilizer

Objective 5 – Stormwater/Urban Issues

1. Educate landowners & businesses on non-ag use of fertilizers – annual news articles and brochures
2. Educate communities on stormwater management – info BMPs (rain gardens)

Goal 5 – Protect & Enhance In-stream, Riparian, Wetland, & Upland Habitat

Objective 1 – Encourage Use of BMP's

1. Installation of riprap & lunkers – 2/yr
2. Installation of grassed waterways – 1/yr
3. Promote rotational grazing – brochures & news articles
4. Write TRM grant for projects – annually (NMFEG 2009-10, 2010-11, 2011-12, 2009 FEMA Grant)
5. Inform landowners about Wildfire Damage Program - annually

Objective 2 – Educate landowners regarding use of buffers

1. CREP enrollment in buffers 2007 only
2. Tree sales – 20,000 to 25,000 trees annually

Objective 3 – Increase Natural Resource-based tourism

1. Clean up Pecatonica – 5-10 snags/yr
2. Special corridors for conservation – distribute fact sheets & brochures
3. Landings on Pecatonica – install 1 “All accessible”/yr with Alliance & DNR
4. Work with Sportsman's Clubs on clean up & education – brochures/grants

Objective 4 – Maintain Yellowstone Watershed

1. Perform status reviews – 2/yr
2. Monitor water quality, encourage Alliance to start monitoring program (GPS Yellowstone St Park with Fox Valley Tech. College – 30+ people, 2 days - 2009)

6 – Address Invasive Species

Objective 1 – Educate on Control of Invasive Species

1. Sponsor Invasive Species workshop – 2008, 2010, 2011
2. Work with Hwy Dept. on spraying for control annually
3. Newsletter articles & brochures – annually
4. Work with ALEA on Prairie Plant sale – annually

7 – Inform and Educate Landowners on Renewable Energy

Objective 1 – Research Biofuels

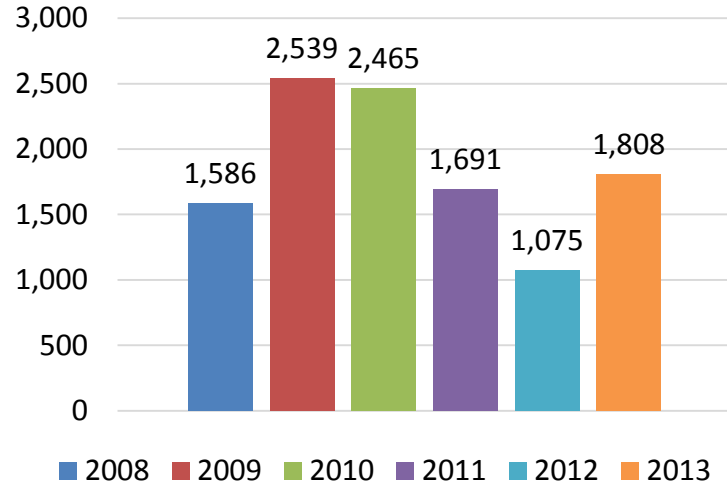
1. Keep current with regulations in regards to conservation
2. Provide landowners with I&E – 1 news article/yr
3. Provide factsheets/brochures for how to handle waste – annually

Objective 2 – Research Wind Energy

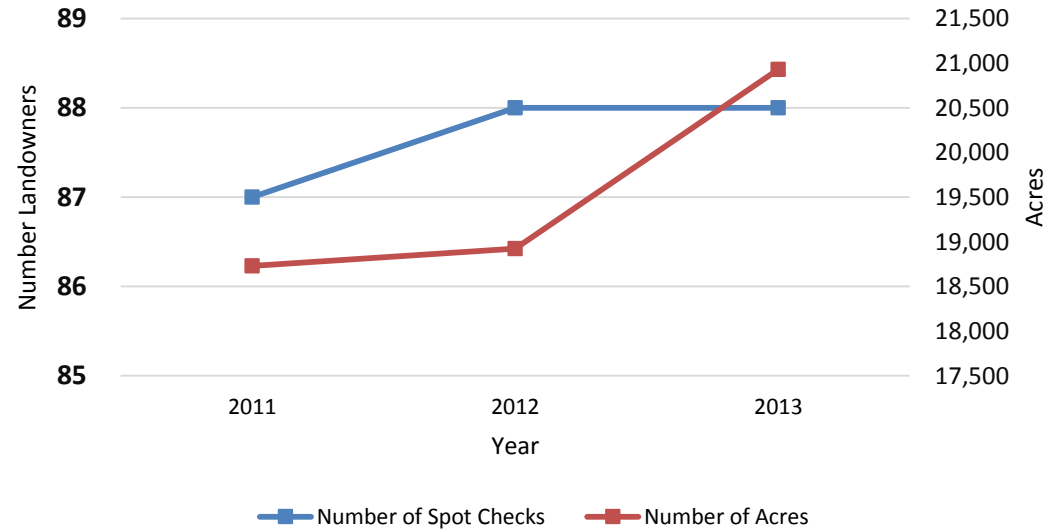
1. Provide landowners with current info – 1 newsletter/yr
2. Keep current with Farm Bill in regards to renewable energy – 1 news article/yr

Accomplishments 2008-2013

NRCS Conservation Programs Completed



Number of Spot Checks 2011 - 2013



Accomplishments 2008-2013

Conservation Reserve Enhancement Program

| | |
|-----------------------------|------------------------------------|
| Acres Enrolled | 1,266 |
| Nitrogen Reduction (pounds) | 35,529 |
| Cost Share Payments | Over \$4 million Goal 1.1.7 |

| Practices | Number |
|-----------|--------|
|-----------|--------|

| | |
|-------------------------------|---------------------|
| Manure Storage Structure | 9 |
| Well Abandonments | 53 |
| Closure of Impoundment | 4 Goal 2.1.1 |
| Grade Stabilization Structure | 3 |
| Total | 69 |

Working Lands Initiative

| | |
|-------------------------------|-----------------------|
| # Farmers Received Assistance | 1,520 Goal 3.1 |
| Dollar Amount | \$1,687,468 |
| Acres enrolled | 126,072 |

| Practices | Acres |
|-----------|-------|
|-----------|-------|

| | |
|-----------------------------|---------------------------|
| Heavy Use Area | 1.5 |
| Waterway | 2.8 Goal 5.2.1 |
| Wetland Restoration | 4 Goal 5.1.1/5.1.2 |
| Hydroseeding | 35 Goal 5.1.2 |
| Mulching | 37 |
| Critical Area Stabilization | 2 |
| Total | 82.3 |

Conservation Partners

1. Community Partners Supporting Agriculture
2. Lafayette County Sportsmen's Clubs
3. Local units of Government
4. Southwest Badger Resource Conservation and Development Council
5. Southwestern Wisconsin Regional Planning Commission
6. Department of Natural Resources
7. Land Conservation Committee
8. Natural Resources Conservation Service
9. University Extension – Lafayette, Grant, and Iowa Counties
10. Lafayette County Co Sportsman Alliance
11. Ducks Unlimited
12. Bluebird Society
13. Parrfection Produce
14. Friends of Pecatonica
15. Organic Valley

2008-2013 County Highlights

Pecatonica Battlefield and Register of Historic
Places



Pecatonica Battlefield – Town of Wiota

- Nominated at the State Level of Significance
 - Significant as a skirmish site associated with the Black Hawk War
 - War probable “turning point” in carrying on war against Black Hawk and his followers
- “Made” Henry Dodge as war hero and notable state figure



Register of Historic Places

- May 6, 2011 the Pecatonica Battlefield was placed on the State Register of Historic Places
- July 28, 2011 the Pecatonica Battlefield was placed on the National Register of Historic Places



2008-2013 Success Stories

SNAP Plus Nutrient Management Planning Farmer
Training Classes, Agricultural Enterprise Areas,
Prevention of Discharge Notice



Earth day - Black Hawk Memorial Park



Goal 4.1.4

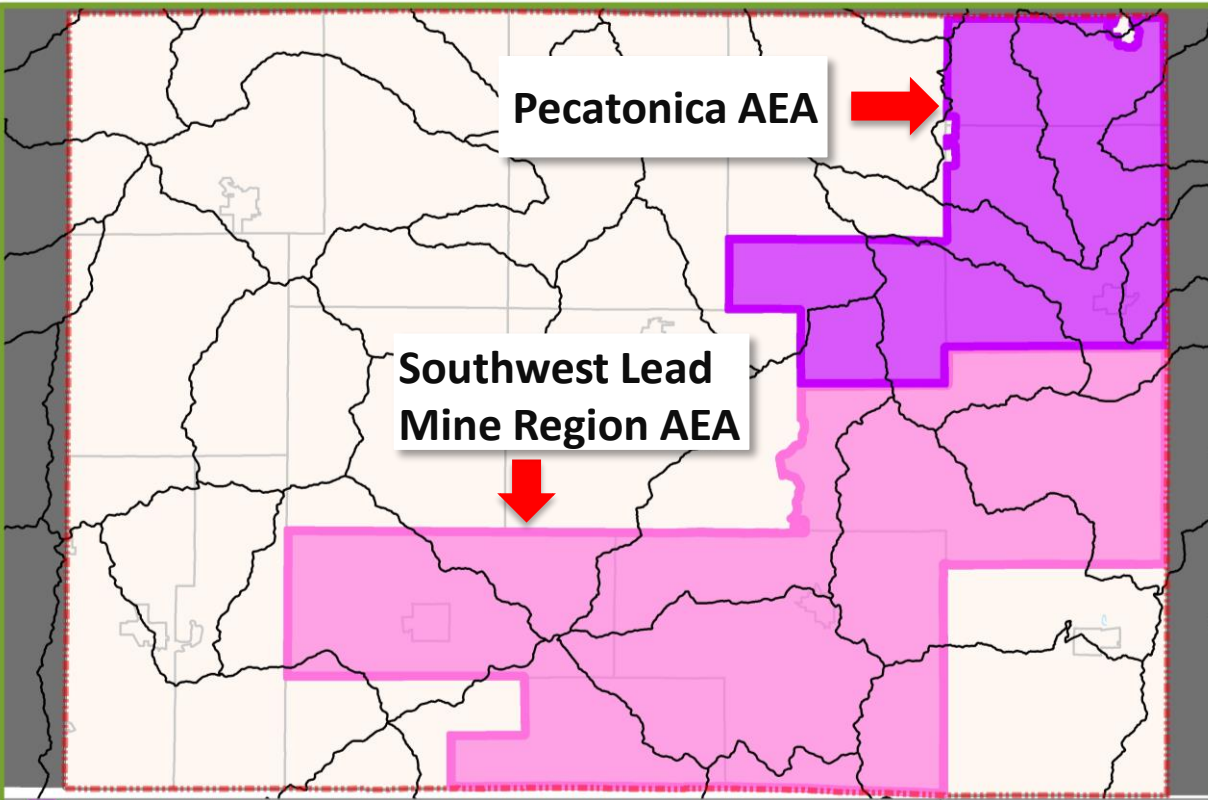
SNAP Plus Nutrient Management – Farmer Training Classes

| | |
|--------------------|----------|
| Class attendance | 167 |
| # NMP's completed | 30 |
| Stipends allocated | \$27,500 |

Goals 2.1.2 & 2.5.1



*Years 2008, 2010 & 2011



Pecatonica AEA

| | |
|------------|----------|
| Agreements | 14 |
| Acres | 2,810.44 |

Southwest Lead Mine Region AEA

| | |
|------------|----------|
| Agreements | 15 |
| Acres | 2,833.53 |

Agriculture Enterprise Areas

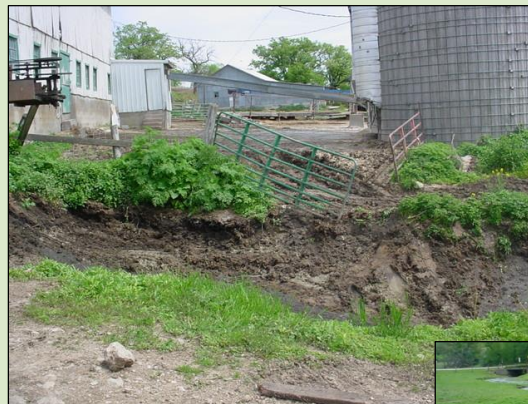
Goal 3.3.2

Prevention of Notice of Discharge

Cited by the DNR for manure runoff into a designated wetland and to Wolf Creek.

Because of the difficult site and financial restrictions, it took several months to design a solution that would be satisfactory to the DNR and the landowner.

The LCD was able to provide a design and cost share the project. Milk house wastewater and manure runoff were eliminated from the wetland and Wolf creek by temporary storage.



Before



Goals 2.1.2/2.3.3

Prevention of Notice of Discharge

Site
Solution



Goals 2.1.2/2.3.3

Prevention of Notice of Discharge

Cited by the DNR for milk house wastewater discharge into an unnamed tributary to the Ames Branch.

A settling basin for the wastewater and overflow to a 6 month storage structure was constructed. A stacking /compost pad was also constructed to contain runoff from bedpack manure.

The LCD was able to provide a design and cost share the project.



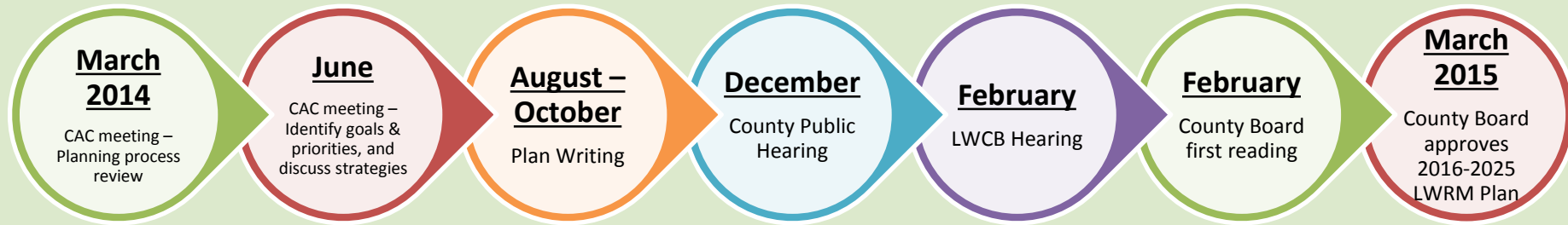
Goals 2.1.2/2.3.3

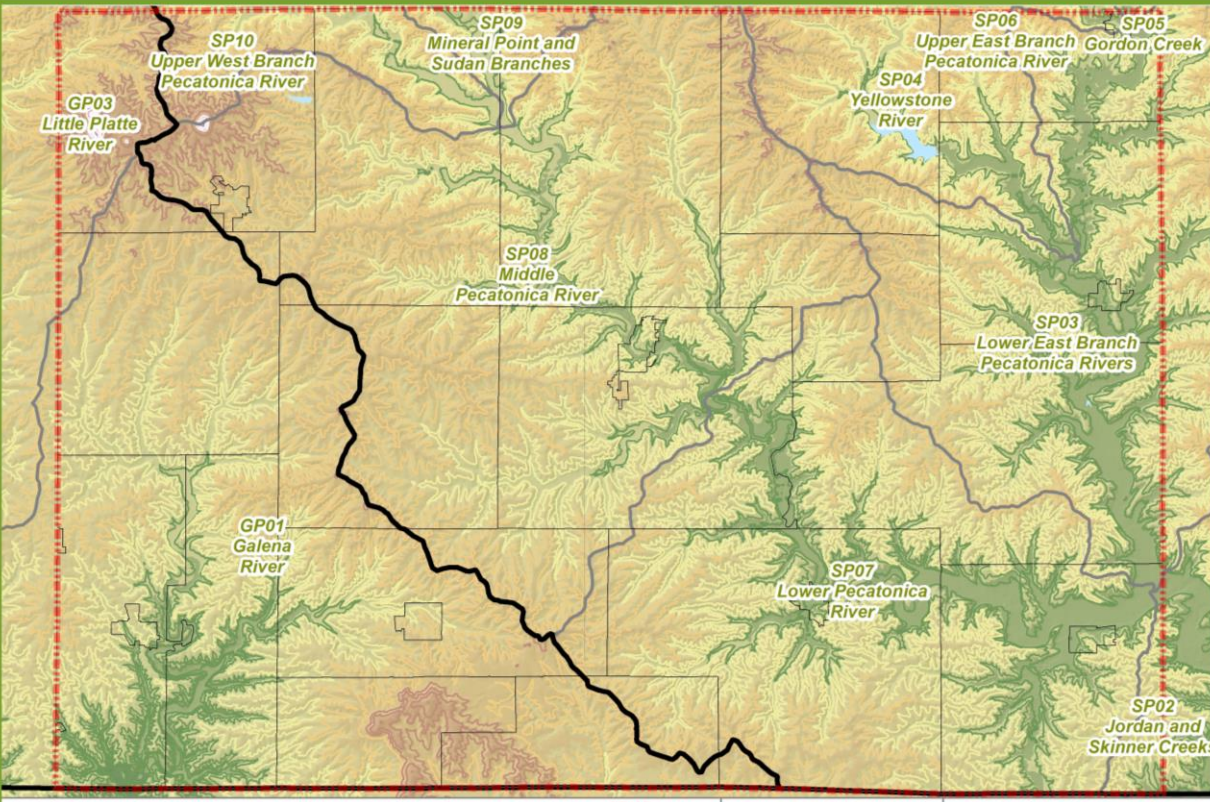
2016-2025 Plan

Project Timeline, County Overview, and Goals
Identification

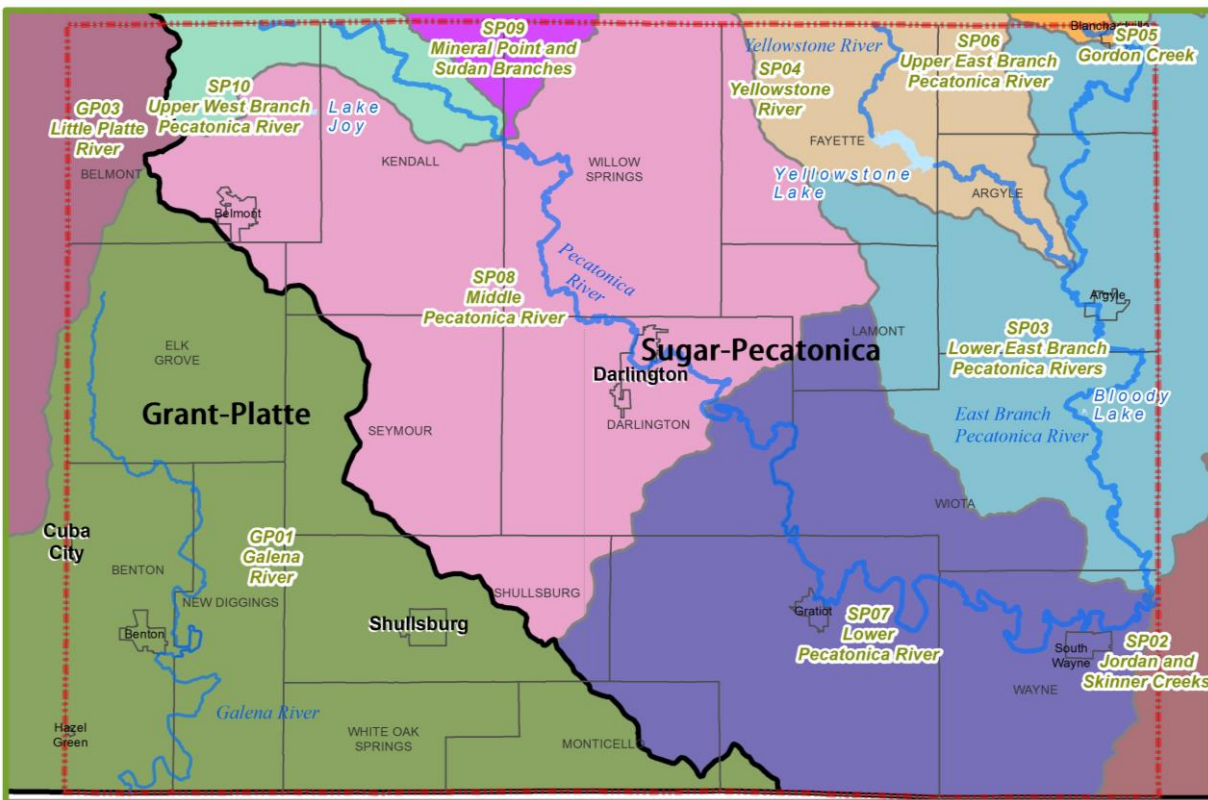


Project – Timeline





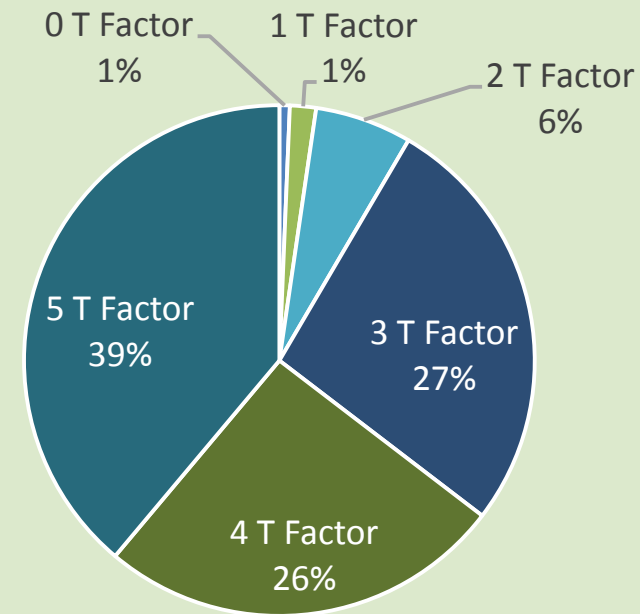
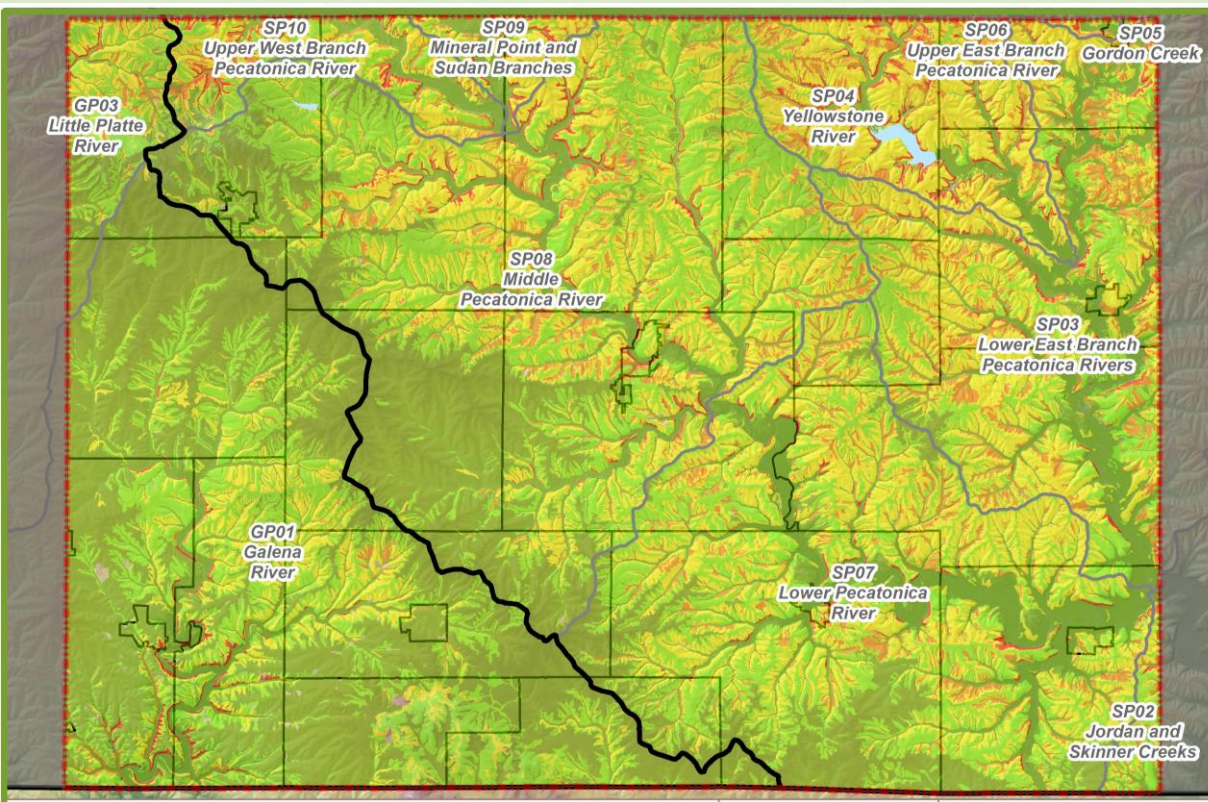
Lafayette County



| Basin/Watershed | % of County comprised of basin/watershed |
|-----------------|--|
|-----------------|--|

- Grant-Platte Basin 27.7%
 - Galena River 25.29%
- Sugar Pecatonica Basin 72.3%
 - Lower East Branch Pec. 12.82%
 - Middle Pec. River 27.78%
 - Lower Pec. River 21.17%

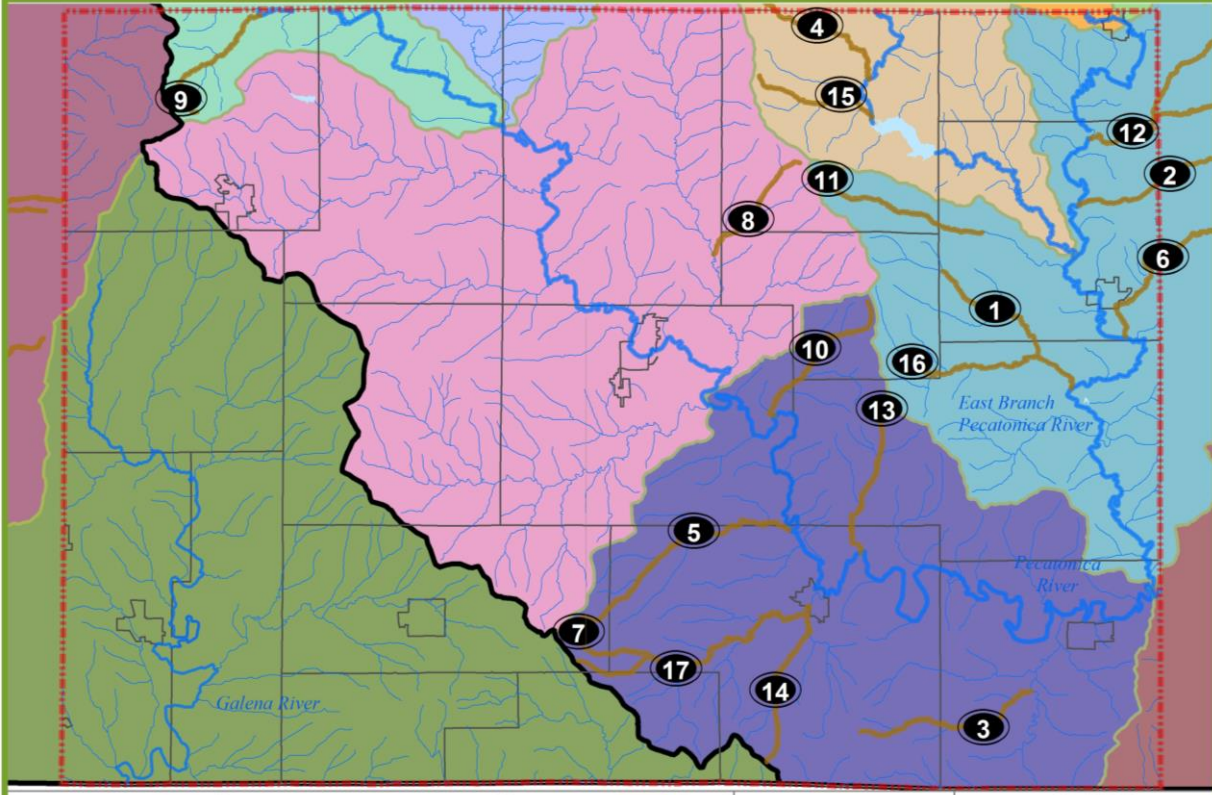
Basins & Watersheds



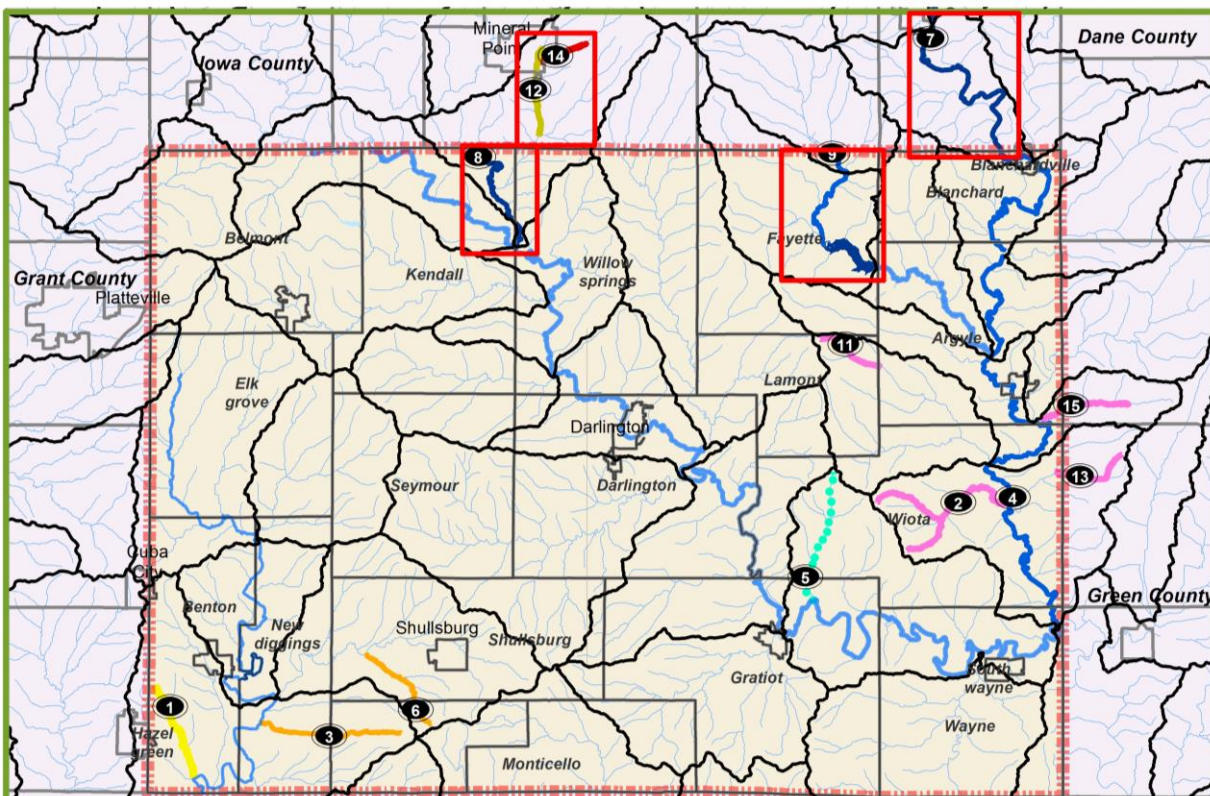
Estimated Allowable Annual Soil Erosion



Soil Erosion T-Factor Values

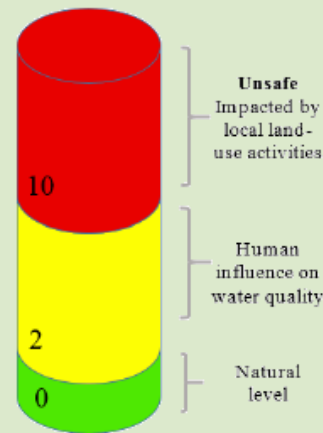
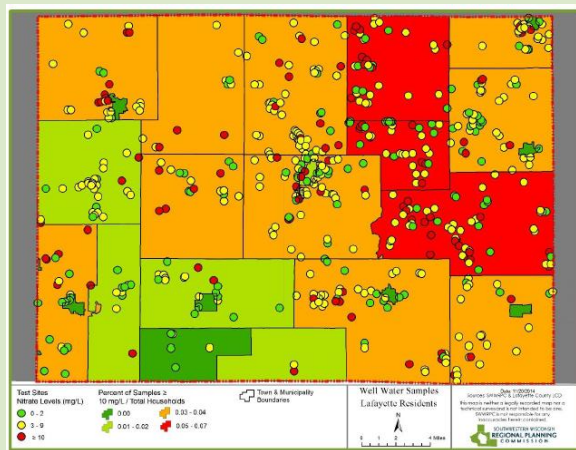
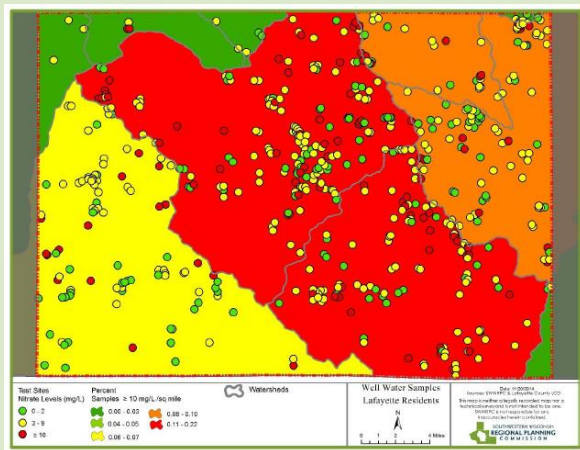


Trout Streams

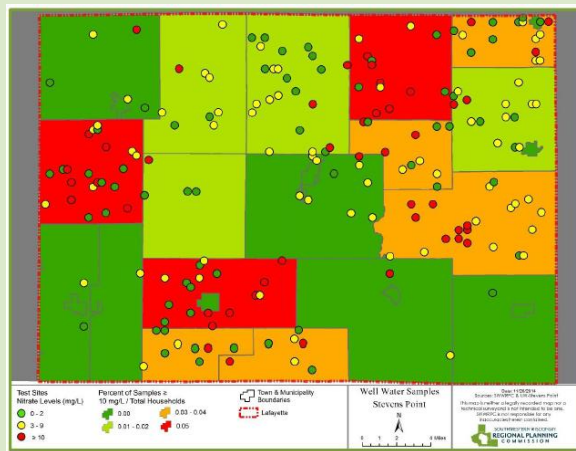
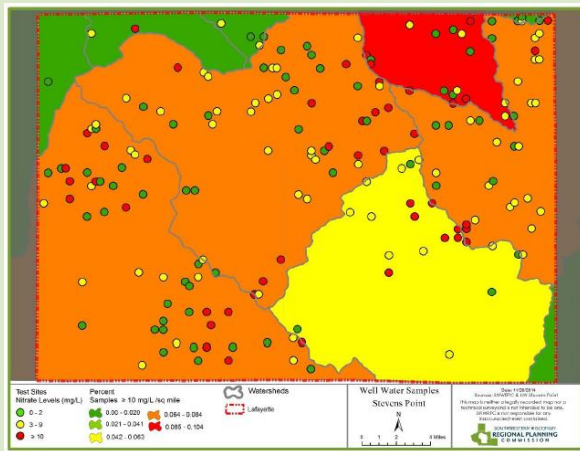


Impaired & Proposed Impaired Waters

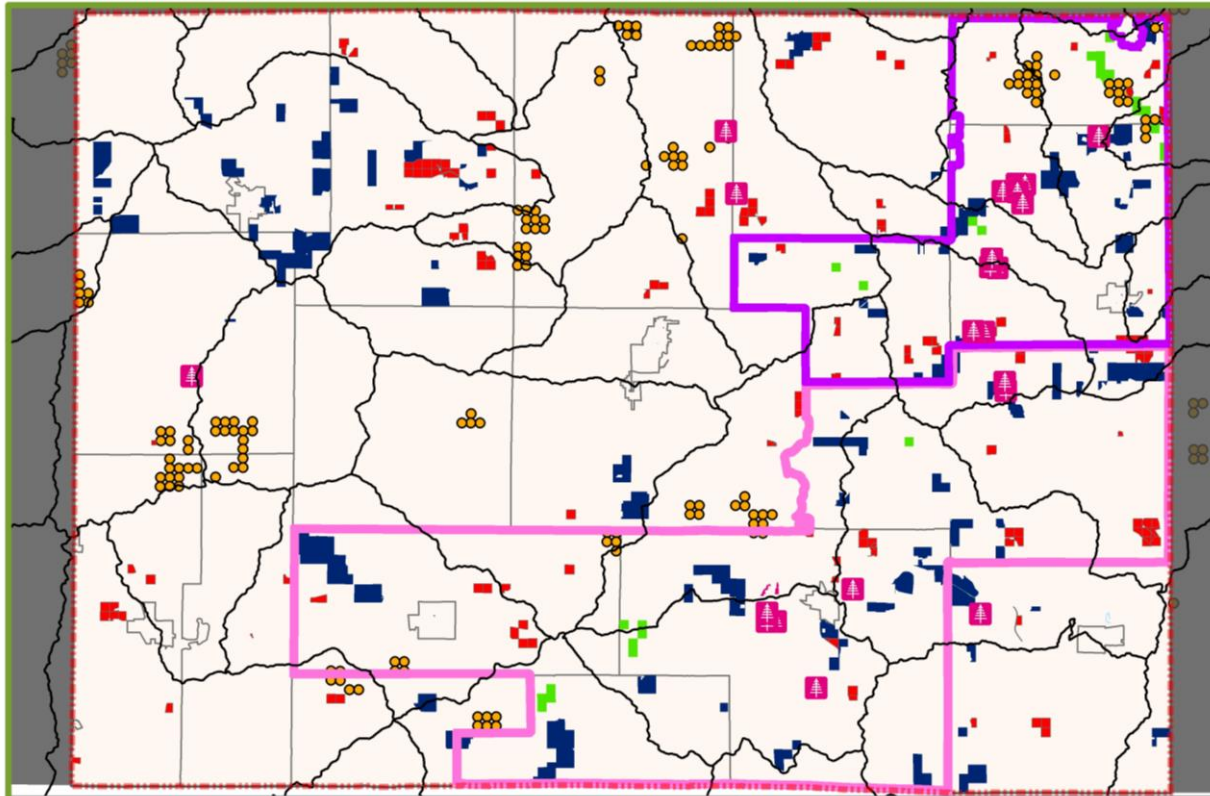
LCD data



UW-Stevens
Point data



Well Water
Samples



- Working Lands 2013 Spot Checks
- CREP Agreements
- AEA Agreements
- Farmland Preservation Agreements
- Managed Forest Law Agreements

Conservation Practice Locations

CAC Meeting – Goals Identification

- Reduce soil erosion
- Develop urban and agriculture stakeholder interest
- Ensure effective nutrient and manure management
- Ensure safe drinking water supply
- Address water and soil quality issues in Farmland Preservation Plan and Land Use Plans
- Promote sustainable agriculture and plan for climate change
- Promote restoration & protection of surface water
- Promote sustainable forest management



Plan Implementation

Information and Education, Regulatory
Administration, Monitoring & Evaluation,
Workplan, and Priority Farm Identification



Plan Implementation

- Information and Education
- Regulatory Administration
 - Compliance Determination
 - Complaints
 - Enforcement
 - Appeals

Newsletter



Plan Implementation

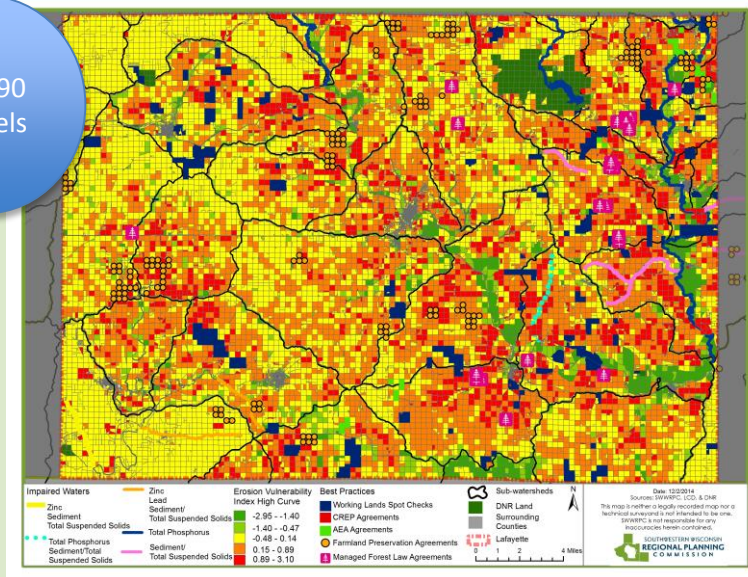
- Monitoring & Evaluation
- Funding Sources to Pursue
 - Targeted Runoff Management Grant
 - Notice of Intent/Discharge Cost-Share Grants
 - Aquatic Invasive Species
 - River Protection Planning and River Protection Management Grants
 - Lake Planning and Protection Grants
- Administrative Recommendations
 - Contact UW-Platteville Depts. identified for internship partners
 - Identify workplan schedules and priorities for working with partner services
 - Support new ordinances and ordinance modernization
 - Apply for grants mentioned above
 - Attend state and local training
 - Improve records keeping and data collection for all field visits, well tests, permits issued, and other work
 - Use GIS as a tool to identify priority geographies and minimize inefficient implementation
 - Prepare a MOU with DNR for NR 151

Plan Implementation

- LCD Workplan – 5 year workplan
 - Implementation of performance standards for farms
 - Implementation of stormwater and related urban standards Farmland Preservation conservation compliance
 - Groundwater protection: Quality and Quantity
 - Permit and ordinance administration
 - Lake and stream protection
 - Watershed protection
 - Program evaluation and monitoring
 - Spending of state cost-share funds
 - Forestry management

Priority Farm Identification

29,090
Parcels

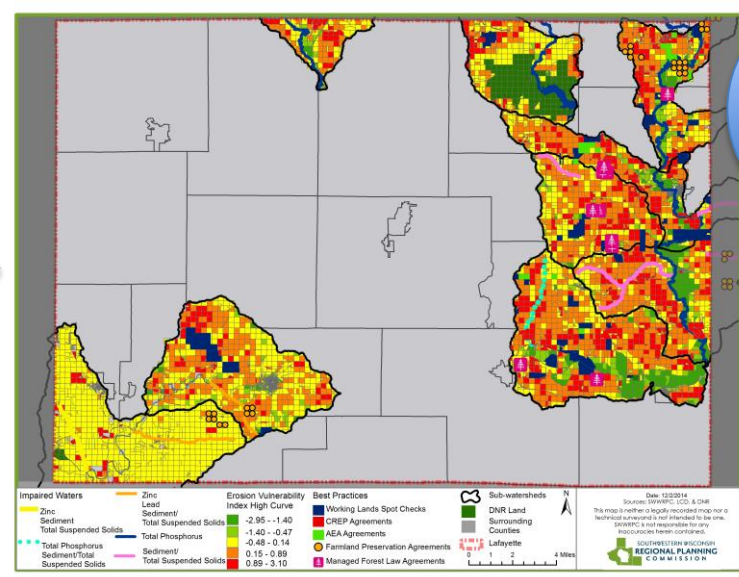


Step 1 – Issue &
Asset
Identification

Impaired waters
Parcels with soil erosion index
Best practice locations
Sub-watersheds
DNR managed land



10,518
Parcels

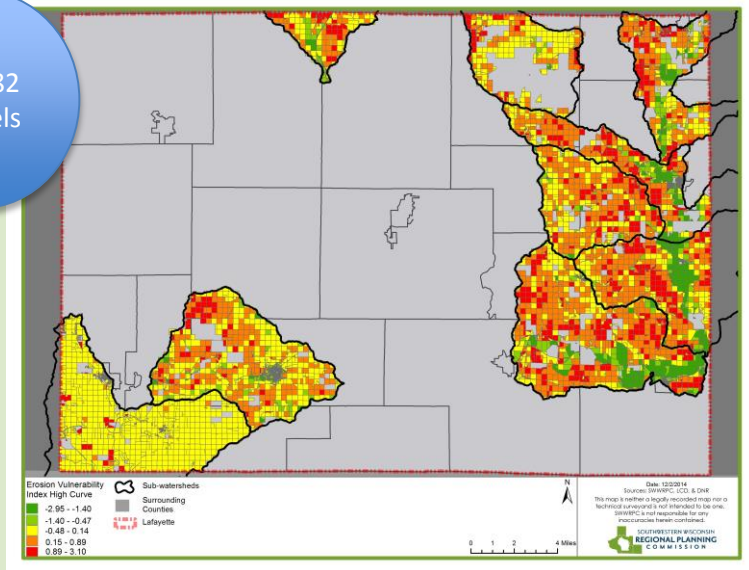


Step 2 – Target Priority
Watersheds

Remove all sub-watersheds that do not
contain impaired or proposed impaired
waters.

Priority Farm Identification

10,182
Parcels

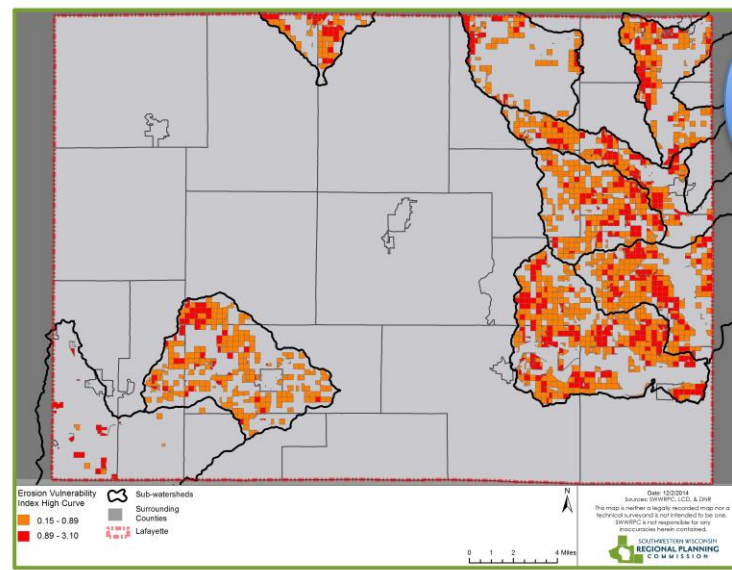


Step 3 – Best Practices

Remove all parcels that have previously been identified as having best practices, and DNR managed land.

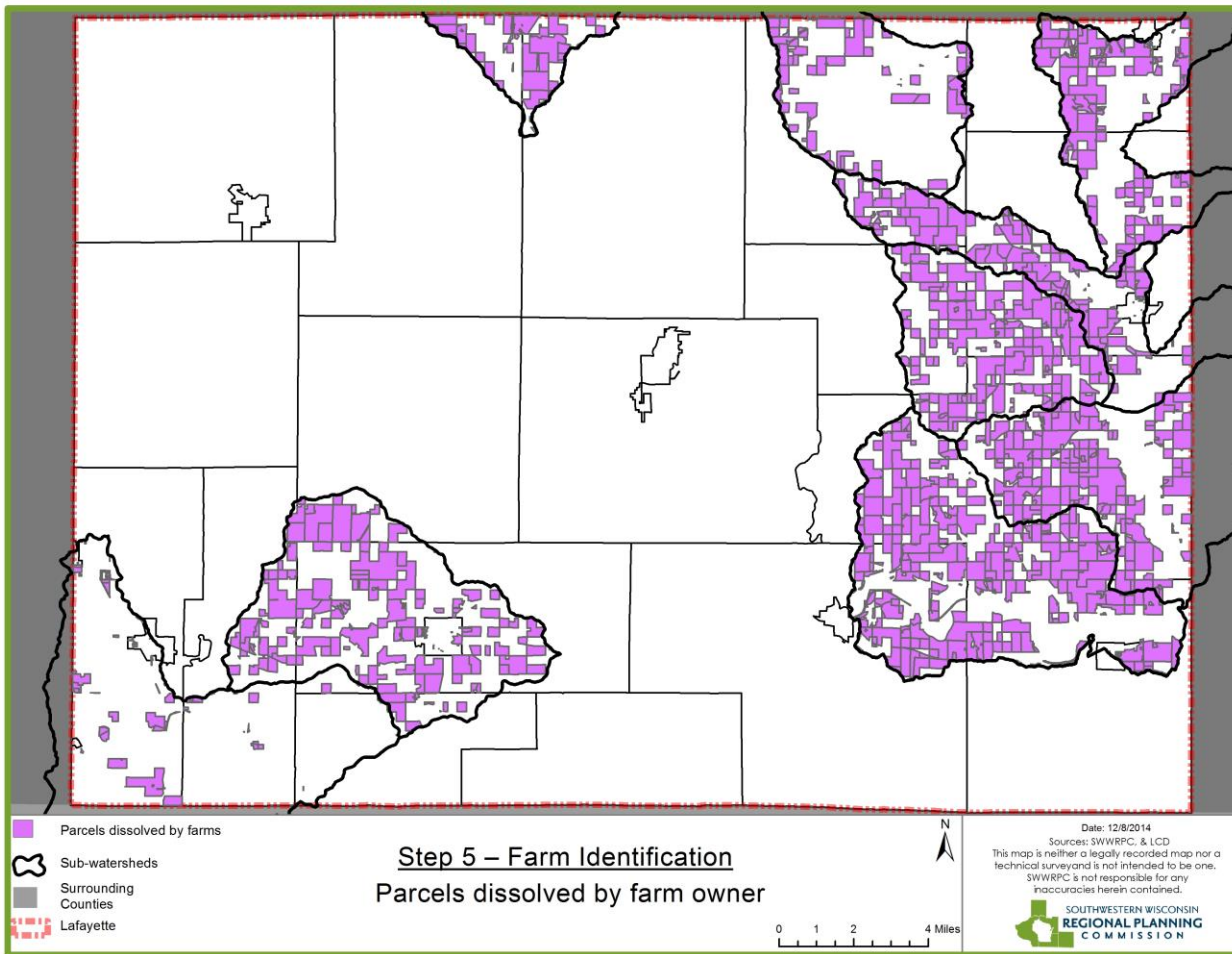


2,521
Parcels



Step 4 – Erosion Potential

Remove all parcels that have low erosion potential per the EVAAL tool.



825
Farms

Farm Identification

Thank You!