

Lafayette County General Zoning

Legend

- ZONED
- UNZONED
- MUNICIPAL

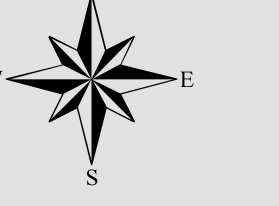
N

Miles

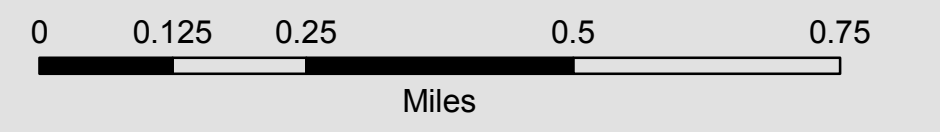
Map features are a representation only and do not replace a survey or other legally recorded documents.
 Map Created: January 2018
 Produced By: Lafayette County Land Information Dept
www.lafayettecountywi.org/lgis



TOWN OF
ARGYLE



1 inch = 950 feet

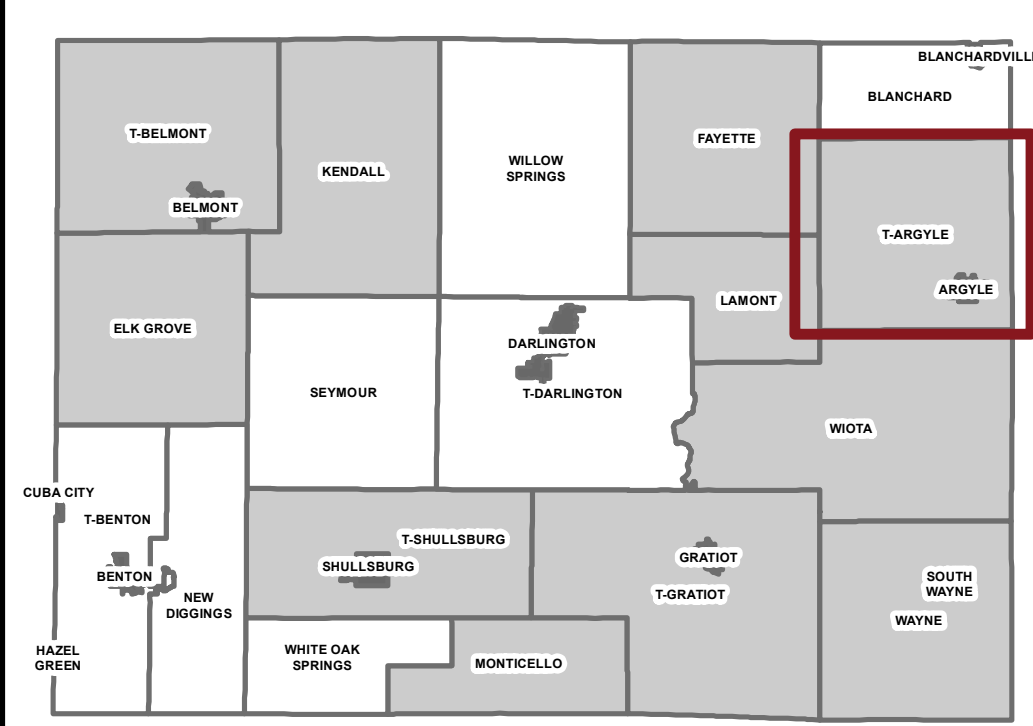


Legend

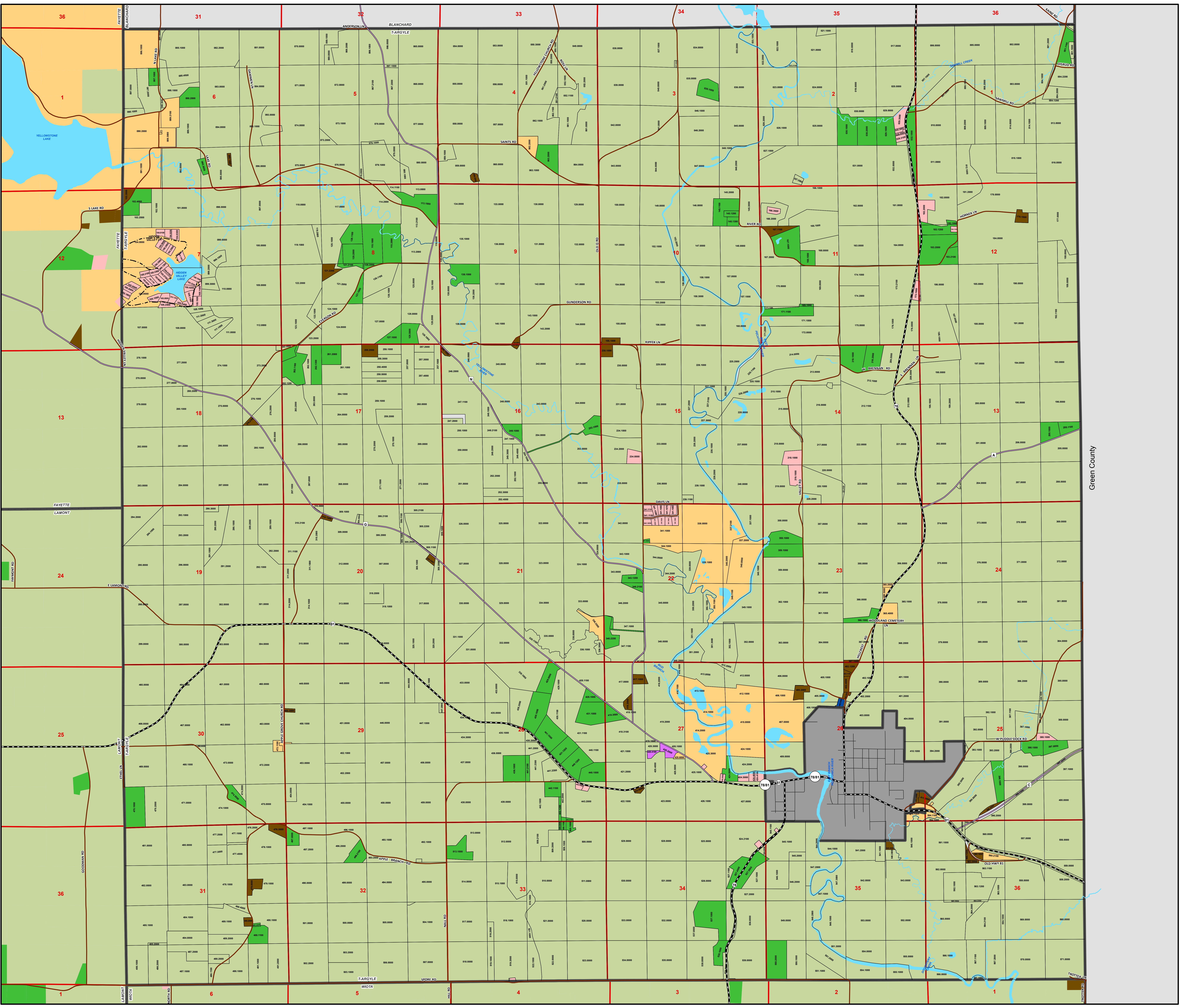
Zoning Classification

- A-1 (Working Lands)
- A-2 (Ag Lands)
- RR (Rural Residential)
- R-1 (Single Family Residential)
- R-2 (Multi Family Residential)
- R-3 (Mobile Home/Multi Unit)
- B-1 (Rural Business)
- C-1 (Commercial Business)
- M-1 (Light Industrial)
- M-2 (Heavy Industrial)
- CFR (Cons-Forest-Rec)
- Municipal Street
- Highway Ramp
- Private Road
- Town Road
- County Road
- State Road
- US Highway
- Tax Parcels
- Sections
- Municipal Boundary
- Waterbody

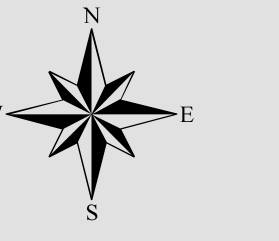
County Overview



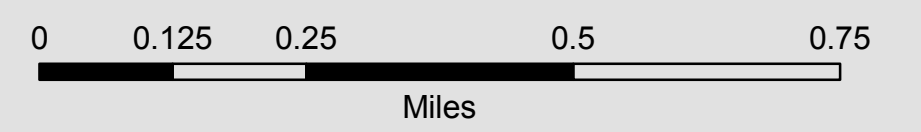
■ CITY/VILLAGE ■ ZONED □ UNZONED



TOWN OF
BELMONT



1 inch = 950 feet

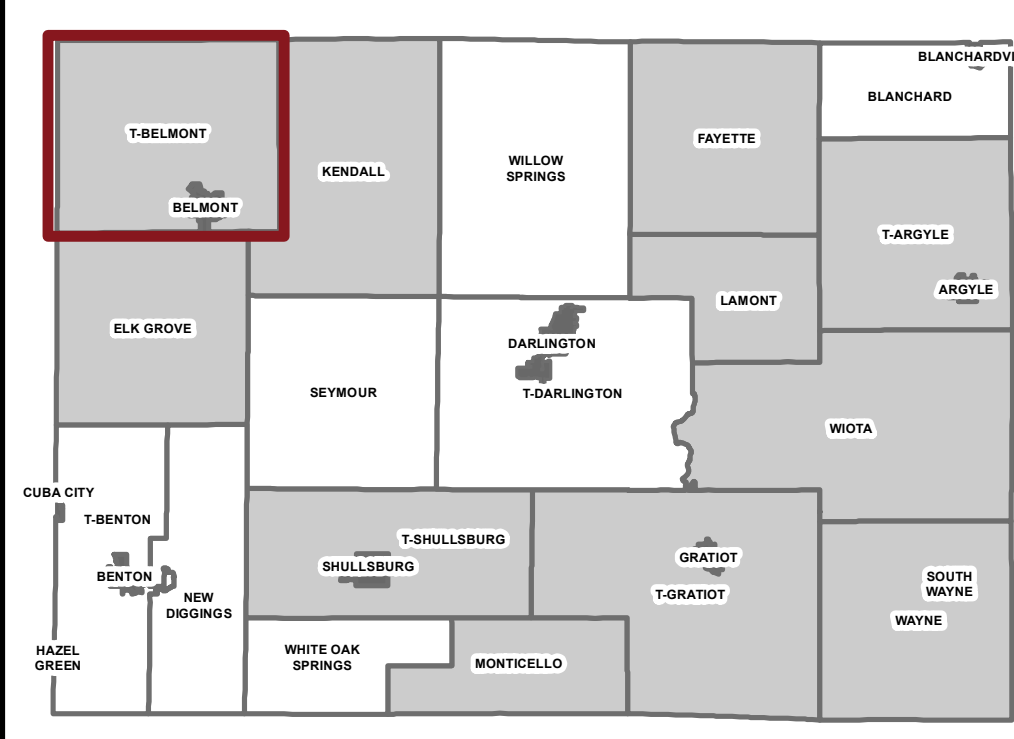


Legend

Zoning Classification

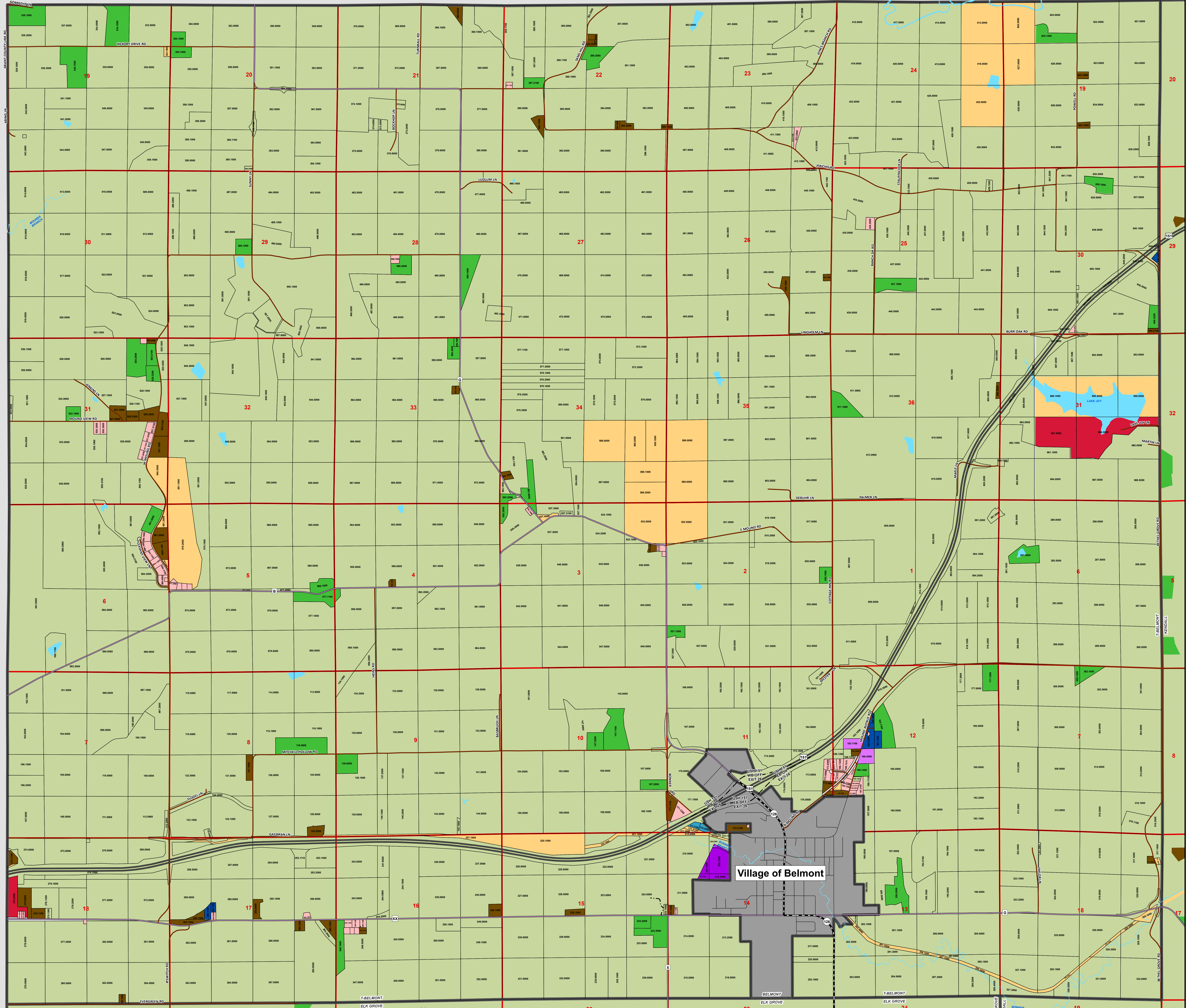
- A-1 (Working Lands)
- A-2 (Ag Lands)
- RR (Rural Residential)
- R-1 (Single Family Residential)
- R-2 (Multi Family Residential)
- R-3 (Mobile Home/Multi Unit)
- B-1 (Rural Business)
- C-1 (Commercial Business)
- M-1 (Light Industrial)
- M-2 (Heavy Industrial)
- CFR (Cons-Forest-Rec)
- Municipal Street
- Highway Ramp
- Private Road
- Town Road
- County Road
- State Road
- US Highway
- Tax Parcels
- Sections
- Municipal Boundary
- Waterbody

County Overview



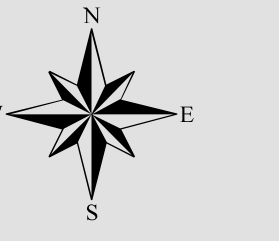
CITY/VILLAGE ZONED UNZONED

GRANT COUNTY

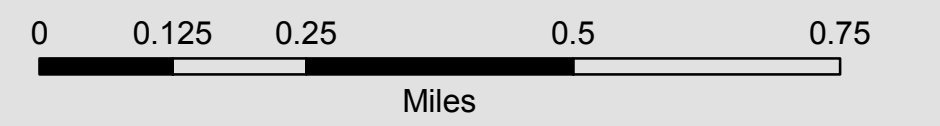


Village of Belmont

TOWN OF
ELK GROVE



1 inch = 950 feet

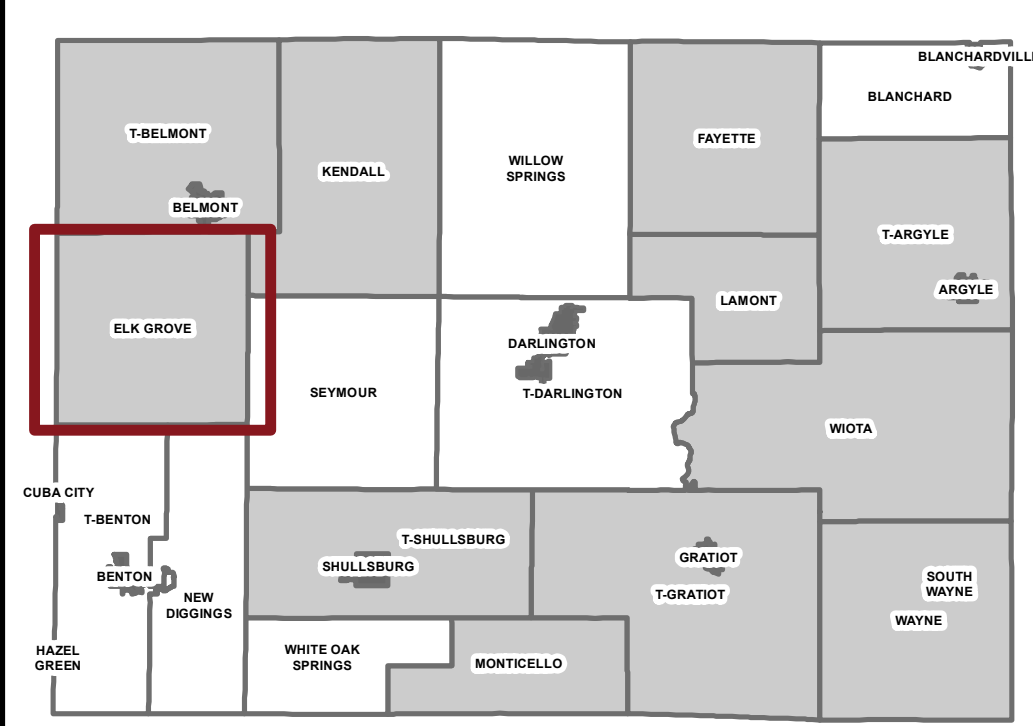


Legend

Zoning Classification

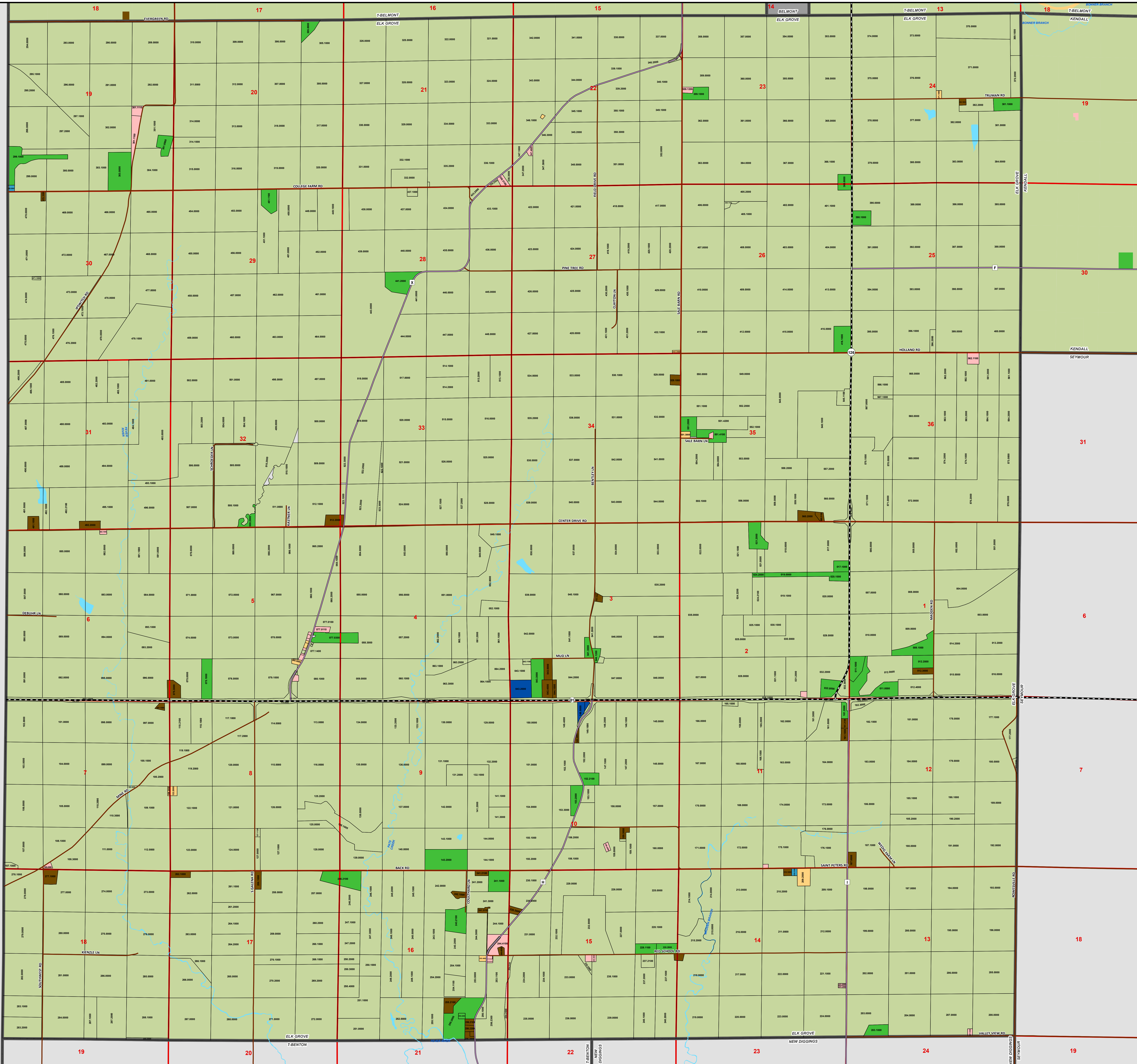
- A-1 (Working Lands)
- A-2 (Ag Lands)
- RR (Rural Residential)
- R-1 (Single Family Residential)
- R-2 (Multi Family Residential)
- R-3 (Mobile Home/Multi Unit)
- B-1 (Rural Business)
- C-1 (Commercial Business)
- M-1 (Light Industrial)
- M-2 (Heavy Industrial)
- CFR (Cons-Forest-Rec)
- Municipal Street
- Highway Ramp
- Private Road
- Town Road
- County Road
- State Road
- US Highway
- Tax Parcels
- Sections
- Municipal Boundary
- Waterbody

County Overview

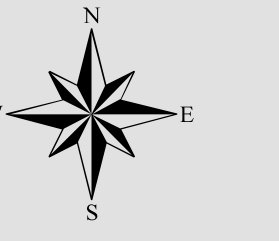


CITY/VILLAGE ZONED UNZONED

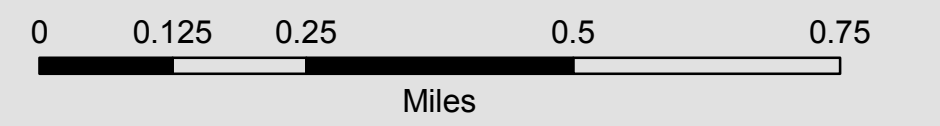
Grant County



TOWN OF
FAYETTE



1 inch = 950 feet



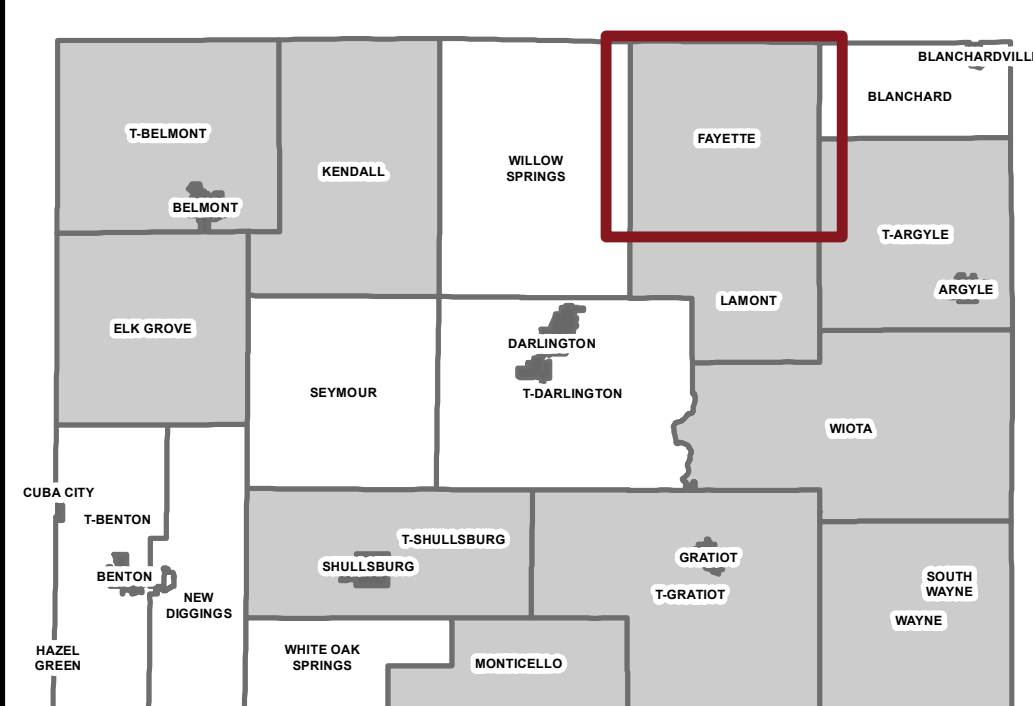
Legend

- Municipal Street
- Highway Ramp
- Private Road
- Town Road
- County Road
- State Road
- US Highway
- Municipal Boundary
- Tax Parcels
- Sections
- Waterbody

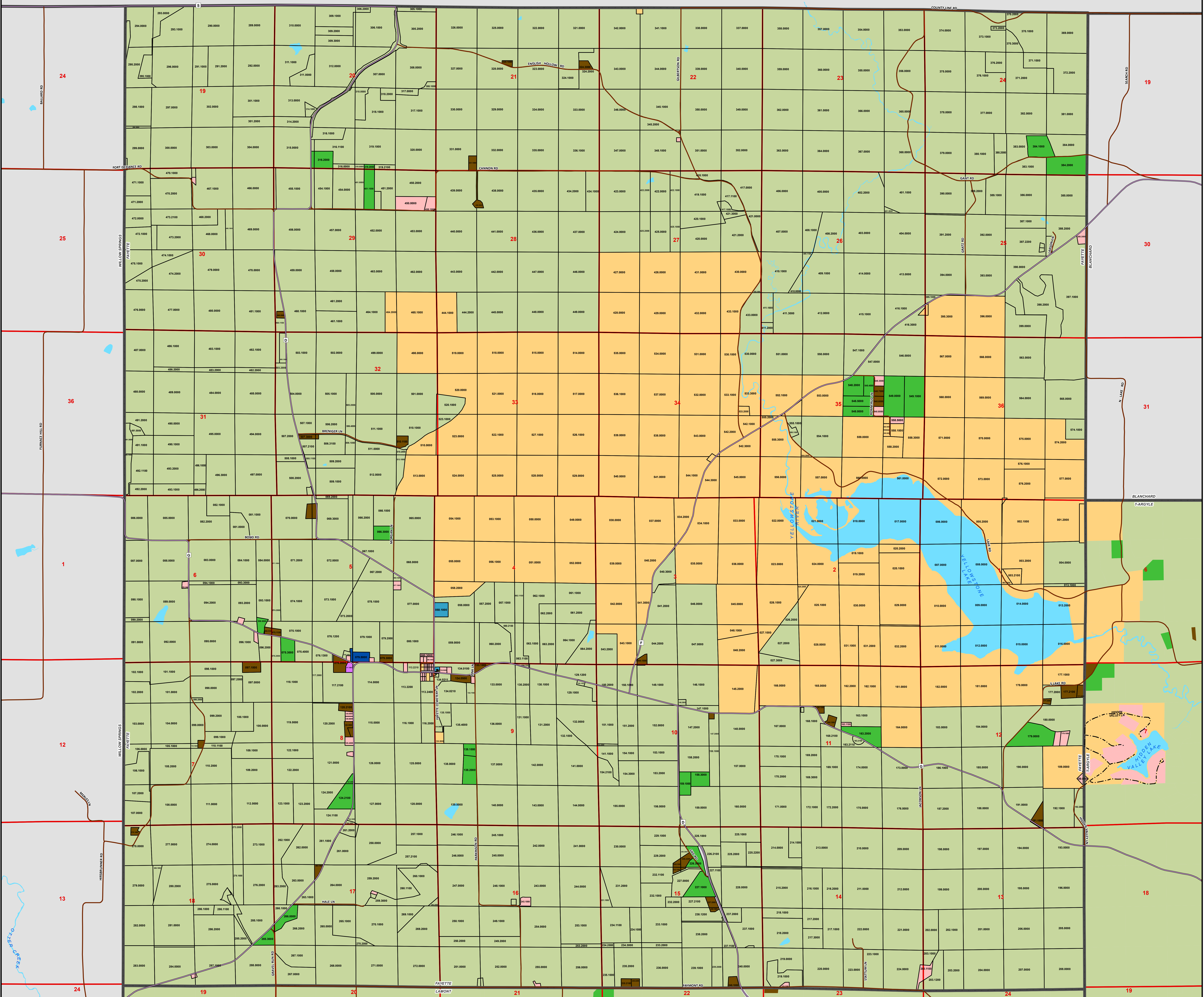
Zoning Classification

- A-1 (Working Lands)
- A-2 (Ag Lands)
- RR (Rural Residential)
- R-1 (Single Family Residential)
- R-2 (Multi Family Residential)
- R-3 (Mobile Home/Multi Unit)
- B-1 (Rural Business)
- C-1 (Commercial Business)
- M-1 (Light Industrial)
- M-2 (Heavy Industrial)
- CFR (Cons-Forest-Rec)

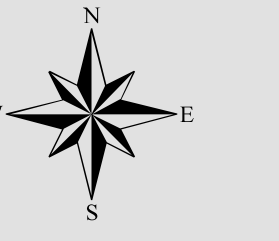
County Overview



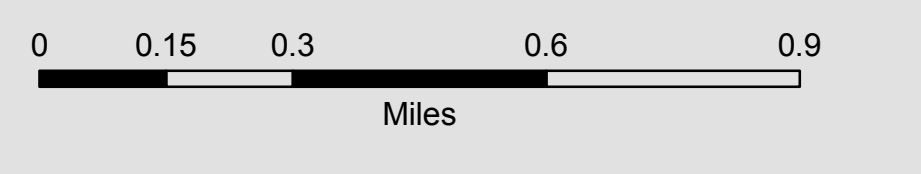
CITY/VILLAGE ZONED UNZONED



TOWN OF
GRATIOT



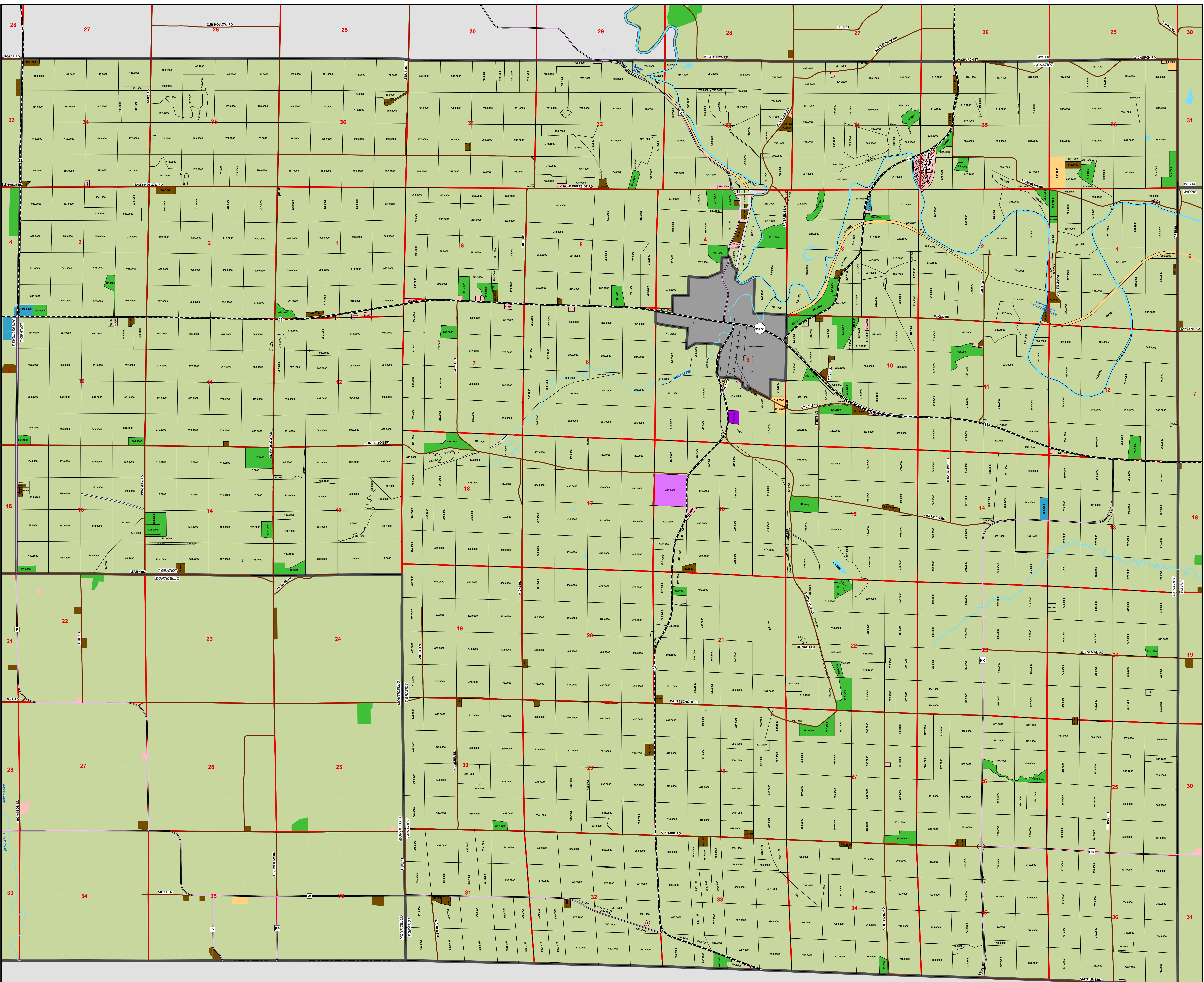
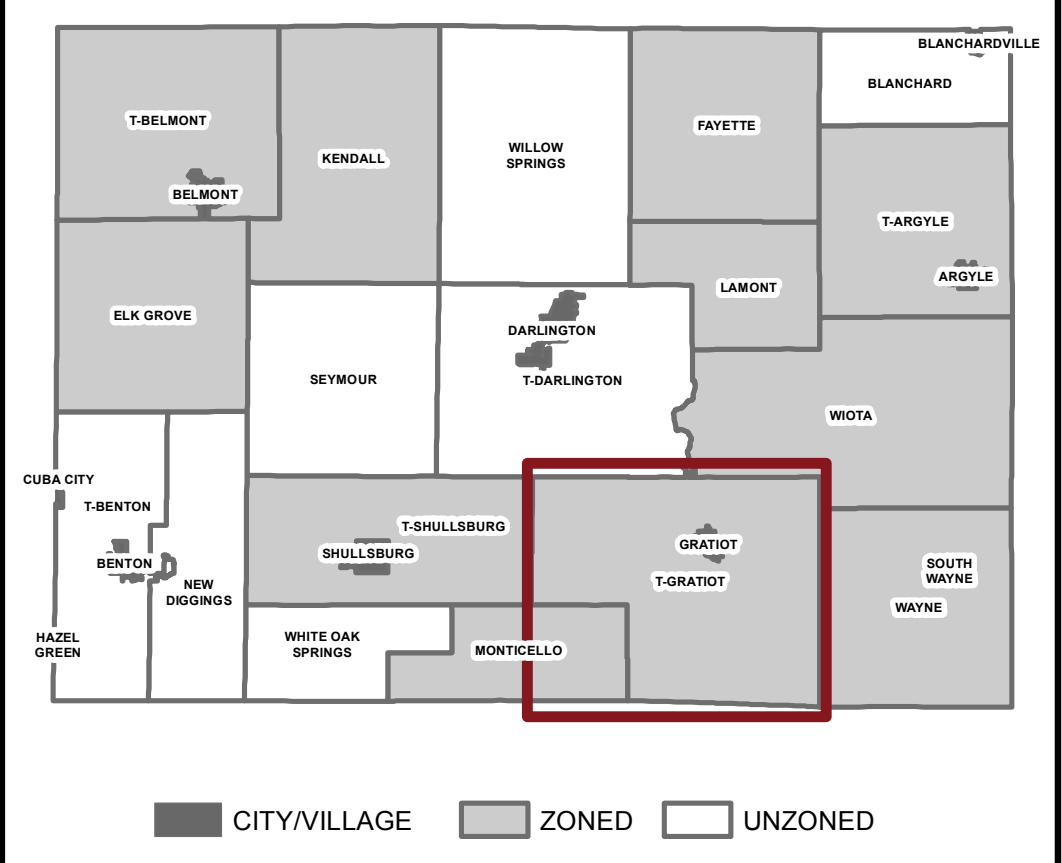
1 inch = 1,200 feet

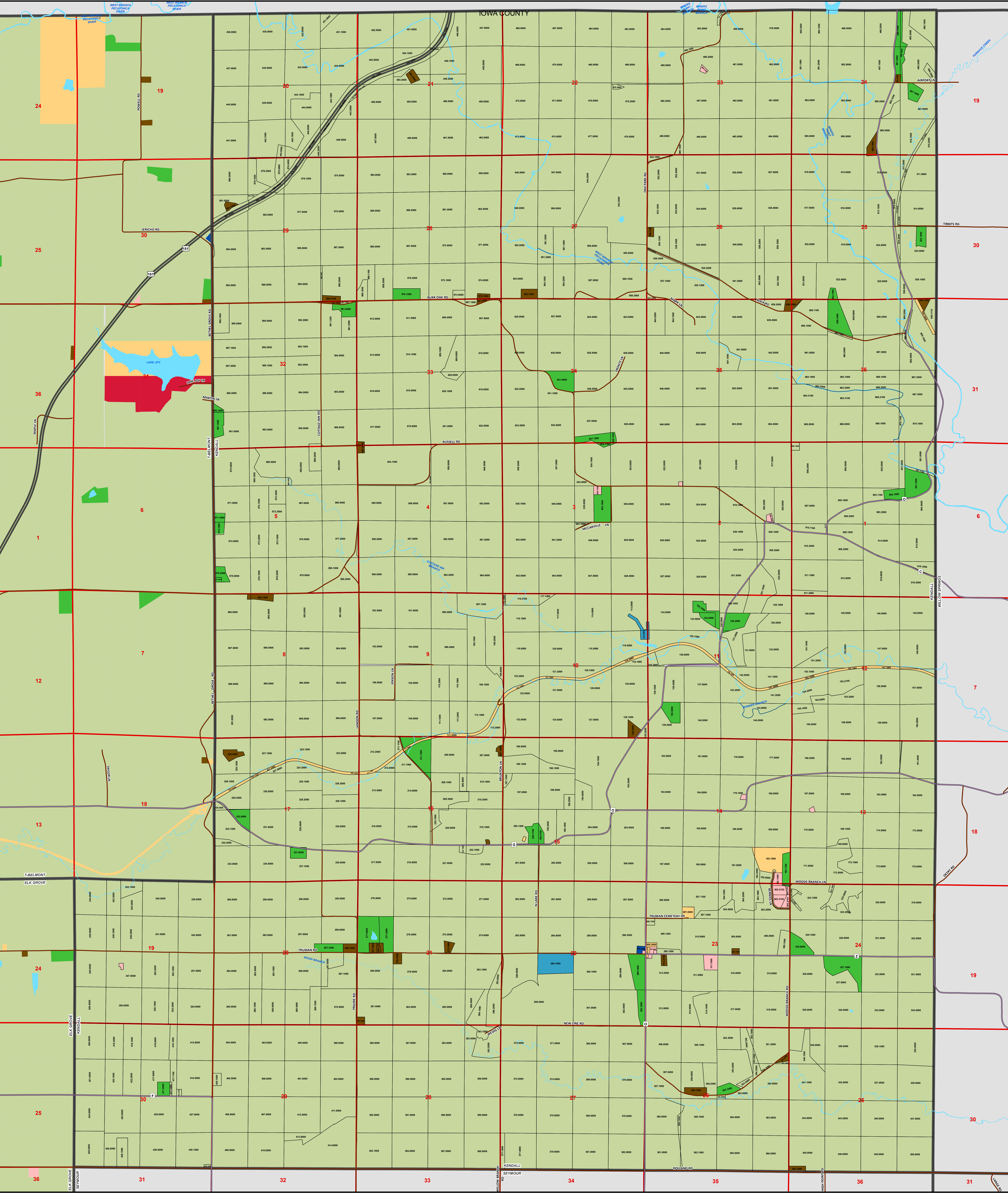


Legend

- Zoning Classification**
- A-1 (Working Lands)
 - A-2 (Ag Lands)
 - RR (Rural Residential)
 - R-1 (Single Family Residential)
 - R-2 (Multi Family Residential)
 - R-3 (Mobile Home/Multi Unit)
 - B-1 (Rural Business)
 - C-1 (Commercial Business)
 - M-1 (Light Industrial)
 - M-2 (Heavy Industrial)
 - CFR (Cons-Forest-Rec)
- Infrastructure**
- Municipal Street
 - Highway Ramp
 - Private Road
 - Town Road
 - County Road
 - State Road
 - US Highway
 - Tax Parcels
 - Sections
 - Municipal Boundary
 - Waterbody

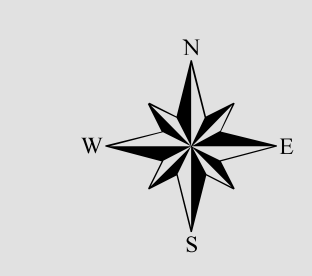
County Overview



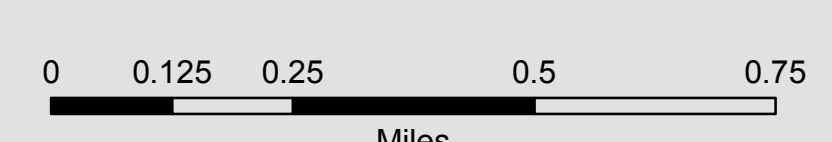


Lafayette County GENERAL ZONING

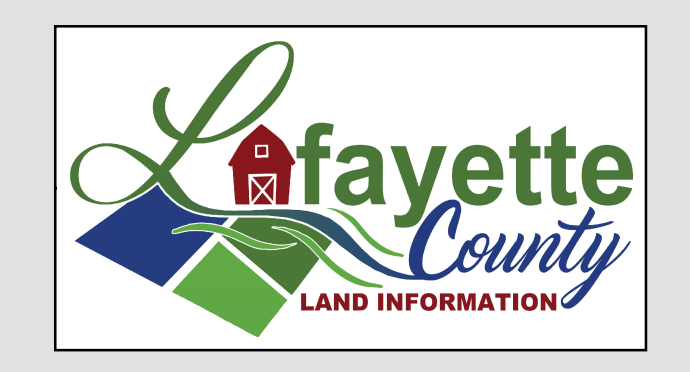
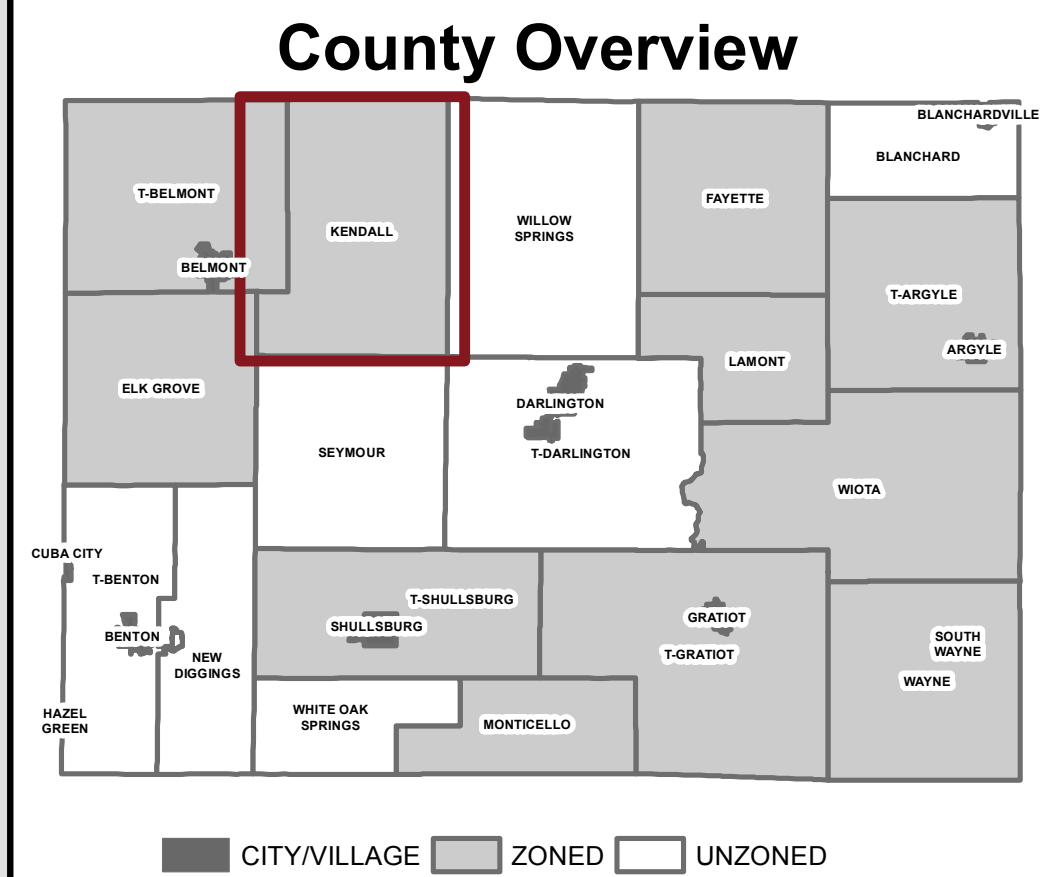
TOWN OF KENDALL



1 inch = 1,050 feet



Legend	
■ A-1 (Working Lands)	Municipal Street
■ A-2 (Ag Lands)	Highway Ramp
■ RR (Rural Residential)	Private Road
■ R-1 (Single Family Residential)	Town Road
■ R-2 (Multi Family Residential)	County Road
■ R-3 (Mobile Home/Multi Unit)	State Road
■ B-1 (Rural Business)	US Highway
■ C-1 (Commercial Business)	Tax Parcels
■ M-1 (Light Industrial)	Sections
■ M-2 (Heavy Industrial)	Municipal Boundary
■ CFR (Cons-Forest-Rec)	Waterbody

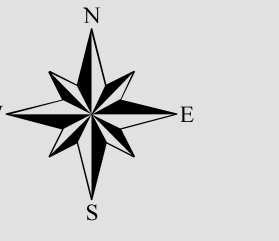


Map Produced By:
Lafayette County Land Information
www.lafayettecountywi.org/ligis

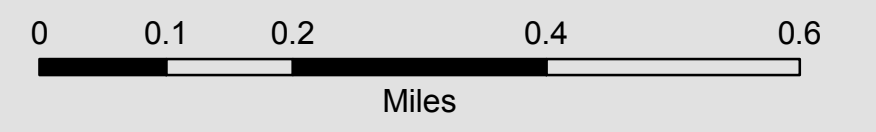
Future zoning updates will be reflected on the Lafayette County interactive mapping application. Map features are a representation only and do not replace a survey or other legally recorded documents.

Map Created: November 2018

TOWN OF
LAMONT



1 inch = 800 feet



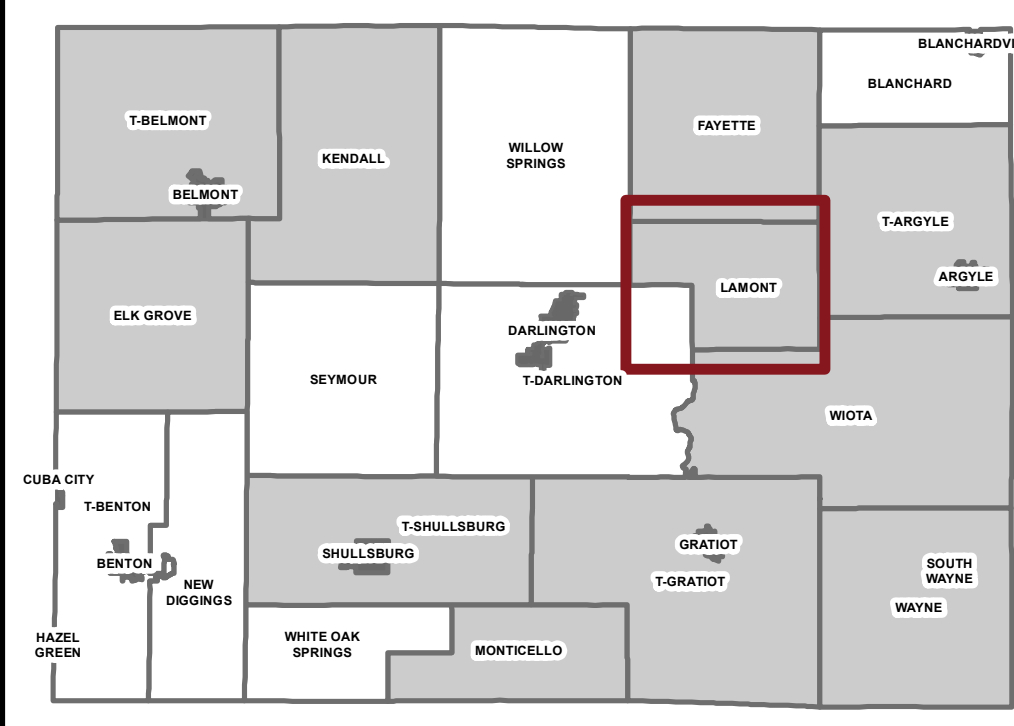
Legend

- Municipal Street
- Highway Ramp
- Private Road
- Town Road
- County Road
- State Road
- US Highway
- Municipal Boundary
- ParcelsTaxData
- Sections
- Waterbody

Zoning Classification

- A-1 (Working Lands)
- A-2 (Ag Lands)
- RR (Rural Residential)
- R-1 (Single Family Residential)
- R-2 (Multi Family Residential)
- R-3 (Mobile Home/Multi Unit)
- B-1 (Rural Business)
- C-1 (Commercial Business)
- M-1 (Light Industrial)
- M-2 (Heavy Industrial)
- CFR (Cons-Forest-Rec)

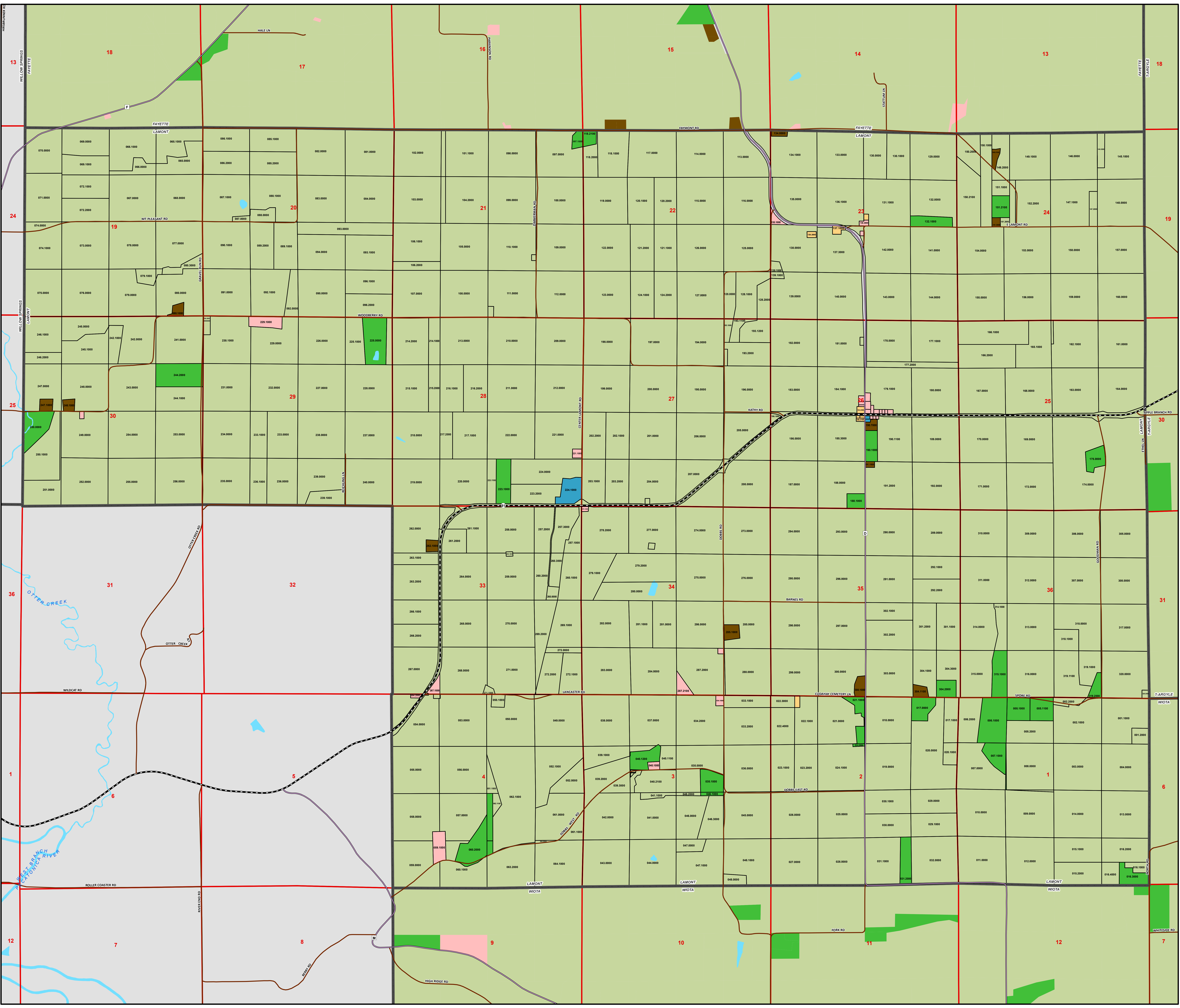
County Overview

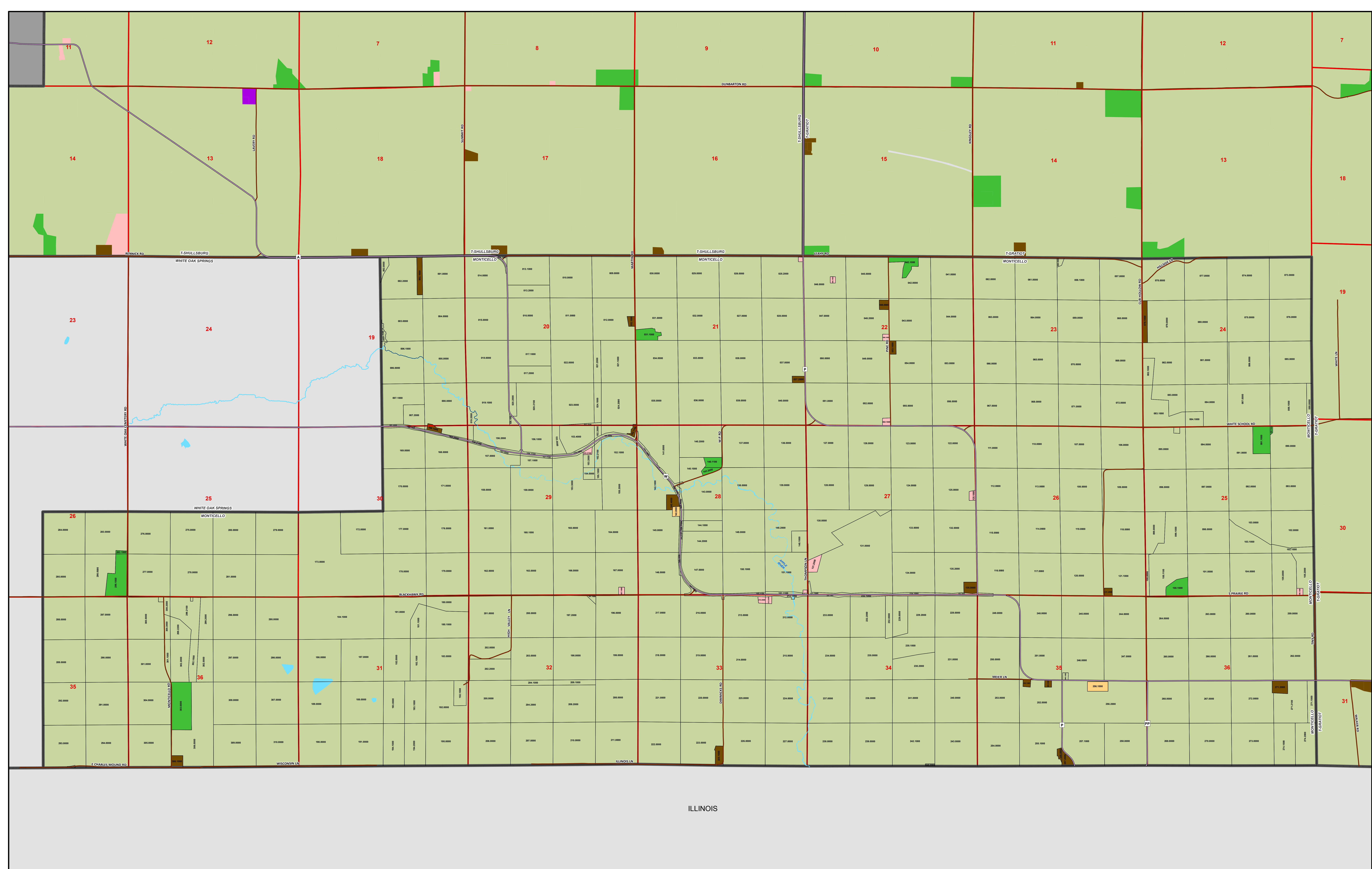


■ CITY/VILLAGE ■ ZONED □ UNZONED



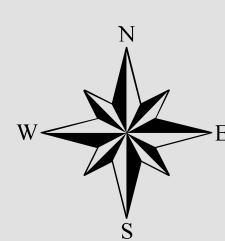
Map Produced By:
Lafayette County Land Information
www.lafayettecountywi.org/lis
Future zoning updates will be
reflected on the Lafayette County
interactive mapping application.
Map features are a representation
only and do not replace a survey or
other legally recorded documents.
Map Created: November 2018



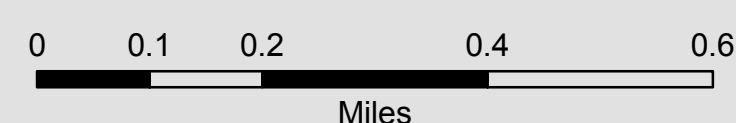


Lafayette County
GENERAL ZONING

TOWN OF
MONTICELLO



1 inch = 900 feet

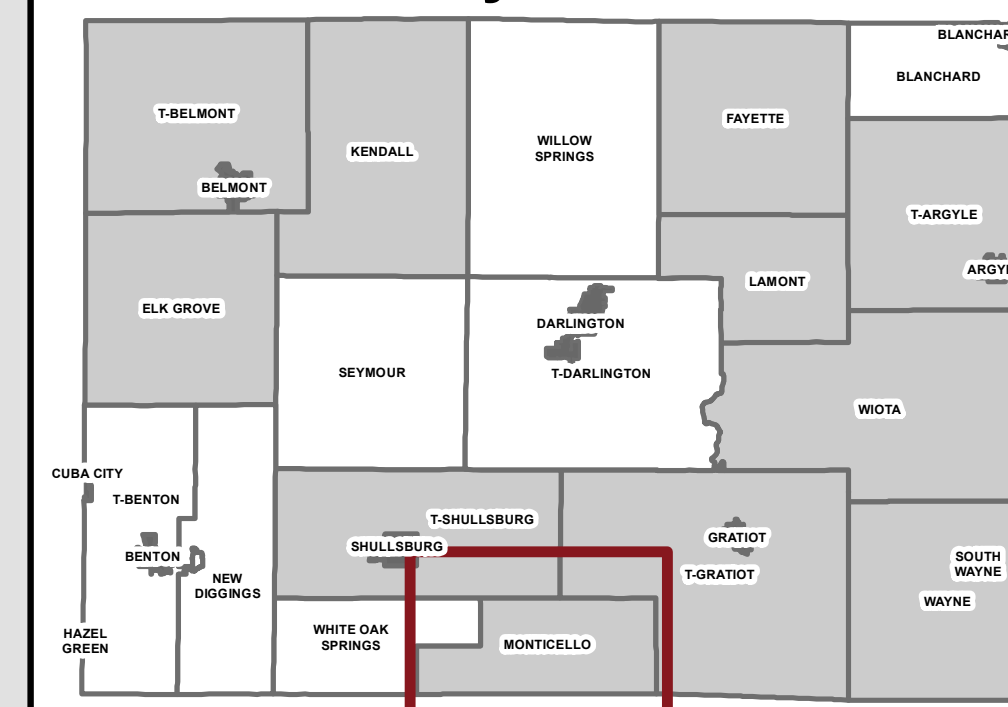


Legend

Zoning Classification

- | | | | | |
|--------------------------------|---------------------------|---------------------------------|------------------|--------------------|
| A-1 (Working Lands) | B-1 (Rural Business) | R-3 (Mobile Home/Multi Unit) | Municipal Street | Sections |
| A-2 (Ag Lands) | C-1 (Commercial Business) | B-2 (Rural Business) | Highway Ramp | Tax Parcels |
| RR (Rural Residential) | M-1 (Light Industrial) | R-1 (Single Family Residential) | Private Road | Municipal Boundary |
| R-2 (Multi Family Residential) | M-2 (Heavy Industrial) | R-2 (Multi Family Residential) | County Road | Waterbody |
| | CFR (Cons-Forest-Rec) | | Town Road | |
| | | | State Road | |
| | | | US Highway | |

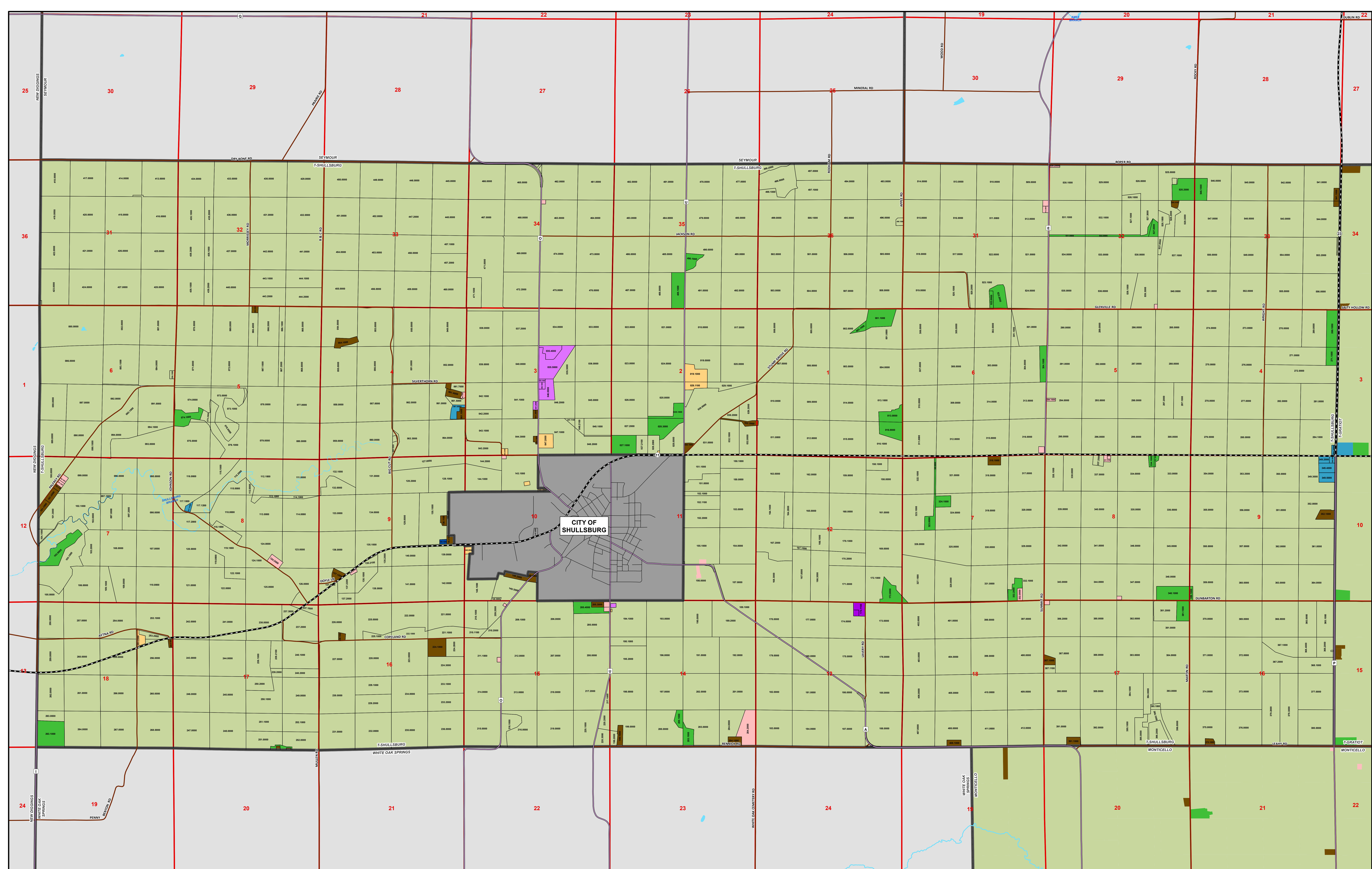
County Overview



Map Produced By:
Lafayette County Land Information
www.lafayettecountywi.org/lgis

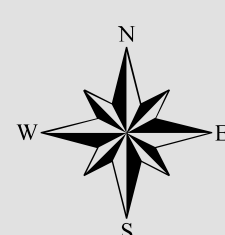
Future zoning updates will be reflected on the Lafayette County interactive mapping application. Map features are a representation only and do not replace a survey or other legally recorded documents.

Map Created: November 2018

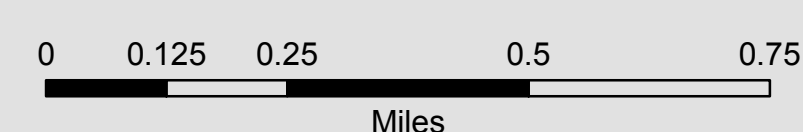


Lafayette County
GENERAL ZONING

TOWN OF
SHULLSBURG



1 inch = 1,050 feet



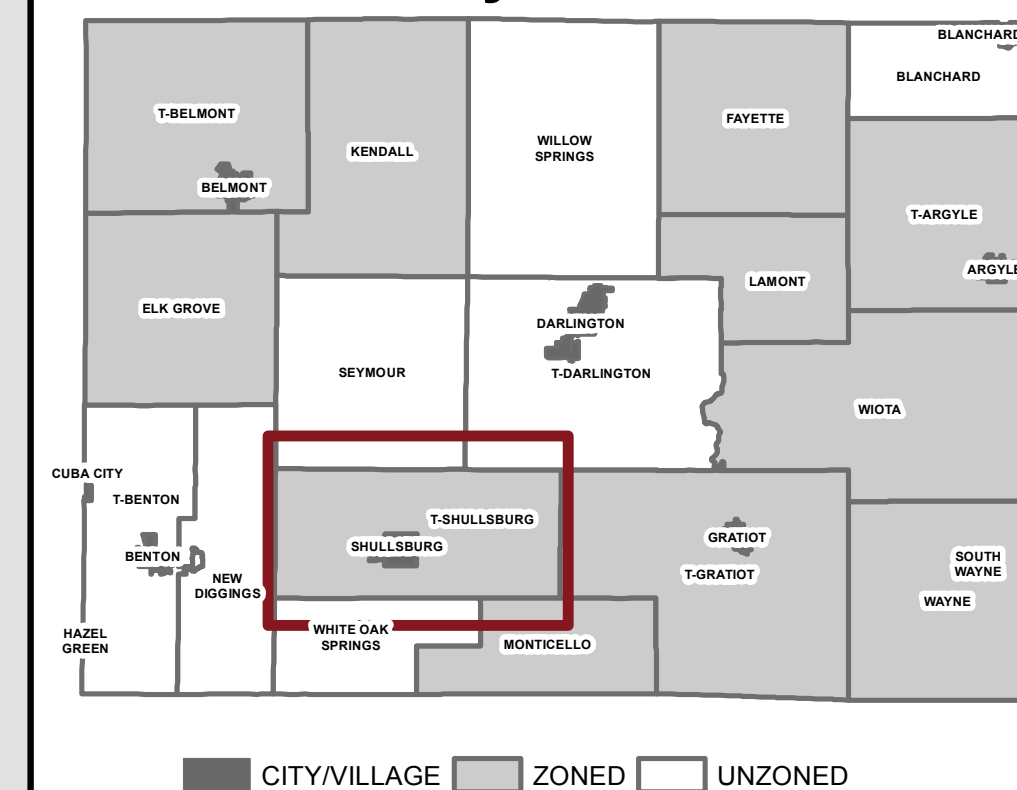
Legend

Zoning Classification

- A-1 (Working Lands)
- A-2 (Ag Lands)
- RR (Rural Residential)
- R-1 (Single Family Residential)
- R-2 (Multi Family Residential)
- B-1 (Rural Business)
- C-1 (Commercial Business)
- M-1 (Light Industrial)
- M-2 (Heavy Industrial)
- CFR (Cons-Forest-Rec)

- Municipal Street
- Highway Ramp
- Private Road
- Town Road
- County Road
- State Road
- US Highway
- Sections
- Tax Parcels
- Municipal Boundary
- Waterbody

County Overview

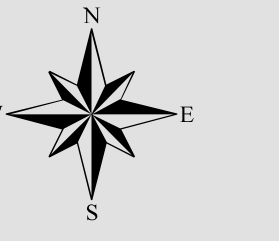


Map Produced By:
Lafayette County Land Information
www.lafayettecountywi.org/lgis

Future zoning updates will be reflected on the Lafayette County interactive mapping application. Map features are a representation only and do not replace a survey or other legally recorded documents.

Map Created: November 2018

TOWN OF
WIOTA



1 inch = 1,400 feet
0 0.175 0.35 0.7 1.05
Miles

Legend

Zoning Classification

- A-1 (Working Lands)
- A-2 (Ag Lands)
- RR (Rural Residential)
- R-1 (Single Family Residential)
- R-2 (Multi Family Residential)
- R-3 (Mobile Home/Multi Unit)
- B-1 (Rural Business)
- C-1 (Commercial Business)
- M-1 (Light Industrial)
- M-2 (Heavy Industrial)
- CFR (Cons-Forest-Rec)
- Waterbody
- Municipal Street
- Highway Ramp
- Private Road
- Town Road
- County Road
- State Road
- US Highway
- Tax Parcels
- Municipal Boundary
- Sections

County Overview

